

Glatte Flansche / Plane Welding Flanges

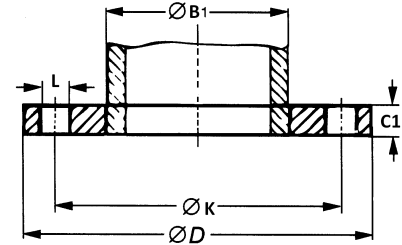
EN 1092-1 Typ 01 - PN 6



Werkstoff / Material:

1.4541 / 1.4571

Maße in mm



PN 6

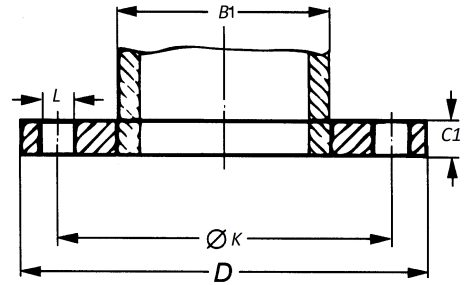
| Rohr-Anschluss | | Flansch / Flange | | | Schrauben / Drilling | | | Gewicht / Weight |
|----------------|----------------|------------------|----------------|-----|----------------------|------------------|----|------------------|
| DN | B ₁ | D | C ₁ | K | Anzahl / pc. | Gewinde / Thread | L | in kg |
| 10 | 18,0 | 75 | 12 | 50 | 4 | M10 | 11 | 0,50 |
| 15 | 22,0 | 80 | 12 | 55 | 4 | M10 | 11 | 0,50 |
| 20 | 27,5 | 90 | 14 | 65 | 4 | M10 | 11 | 0,50 |
| 25 | 34,5 | 100 | 14 | 75 | 4 | M10 | 11 | 0,50 |
| 32 | 43,5 | 120 | 16 | 90 | 4 | M12 | 14 | 1,00 |
| 40 | 49,5 | 130 | 16 | 100 | 4 | M12 | 14 | 1,50 |
| 50 | 61,5 | 140 | 16 | 110 | 4 | M12 | 14 | 1,50 |
| 65 | 77,5 | 160 | 16 | 130 | 4 | M12 | 14 | 2,00 |
| 80 | 90,5 | 190 | 18 | 150 | 4 | M16 | 18 | 3,00 |
| 100 | 116,0 | 210 | 18 | 170 | 4 | M16 | 18 | 3,50 |
| 125 | 141,5 | 240 | 20 | 200 | 8 | M16 | 18 | 4,50 |
| 150 | 170,5 | 265 | 20 | 225 | 8 | M16 | 18 | 5,00 |
| 200 | 221,5 | 320 | 22 | 280 | 8 | M16 | 18 | 7,00 |
| 250 | 276,5 | 375 | 24 | 335 | 12 | M16 | 18 | 9,00 |
| 300 | 327,5 | 440 | 24 | 395 | 12 | M20 | 22 | 12,00 |
| 350 | 359,5 | 490 | 26 | 445 | 12 | M20 | 22 | 17,00 |
| 400 | 411,0 | 540 | 28 | 495 | 16 | M20 | 22 | 20,00 |
| 450 | 462,0 | 595 | 30 | 550 | 16 | M20 | 22 | 24,50 |
| 500 | 513,5 | 645 | 30 | 600 | 20 | M20 | 22 | 26,50 |
| 600 | 616,5 | 755 | 32 | 705 | 20 | M24 | 26 | 35,00 |

Glatte Flansche / Plane Welding Flanges

EN 1092-1 Typ 01 PN 10



Werkstoff / Material:
1.4541 / 1.4571



PN 10

| Rohr-Anschluss / Tube | | Flansch / Flange | | | Schrauben / Screws | | | Gewicht kg weight |
|-----------------------|--------|------------------|----|-----|--------------------|-------------------|----|-------------------------|
| DN | B1 | D | C1 | K | Anzahl number | Gewinde thread | L | |
| 10 | | | | | | | | |
| 15 | | | | | | | | |
| 20 | | Maße siehe PN 40 | | | | | | |
| 25 | | | | | | | | |
| 32 | | | | | | | | |
| 40 | | | | | | | | |
| 50 | | | | | | | | |
| 65 | | Maße siehe PN 16 | | | | | | |
| 80 | | | | | | | | |
| 100 | | | | | | | | |
| 125 | | | | | | | | |
| 150 | | | | | | | | |
| 200 | 221,5 | 340 | 24 | 295 | 8 | M20 | 22 | 9,50 |
| 250 | 276,5 | 395 | 26 | 350 | 12 | M20 | 22 | 12,00 |
| 300 | 327,5 | 445 | 26 | 400 | 12 | M20 | 22 | 13,50 |
| 350 | 359,5 | 505 | 28 | 460 | 16 | M20 | 22 | 20,50 |
| 400 | 411,0 | 565 | 32 | 515 | 20 | M24 | 26 | 27,50 |
| 450 | 462,0 | 615 | 36 | 565 | 20 | M24 | 26 | 33,50 |
| 500 | 513,50 | 670 | 38 | 620 | 20 | M24 | 26 | 40,00 |
| 600 | 616,5 | 780 | 42 | 725 | 20 | M27 | 30 | 54,50 |

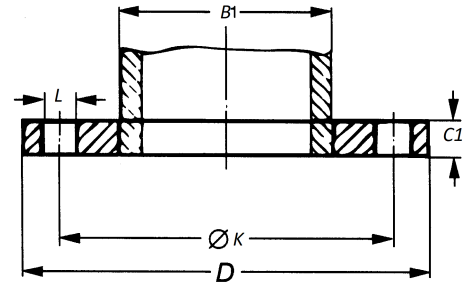
Alle Maße in mm
All sizes in mm

Glatte Flansche / Plane Welding Flanges

EN 1092-1 Typ 01 PN 16



Werkstoff / Material:
1.4541 / 1.4571



PN 16

| Rohr-Anschluss / Tube | | Flansch / Flange | | | Schrauben / Screws | | | Gewicht kg weight |
|-----------------------|-------|------------------|----|-----|--------------------|-------------------|----|-------------------------|
| DN | B1 | D | C1 | K | Anzahl number | Gewinde thread | L | |
| 10 | | | | | | | | |
| 15 | | | | | | | | |
| 20 | | | | | | | | |
| 25 | | | | | | | | |
| 32 | | | | | | | | |
| 40 | | | | | | | | |
| 50 | 61,5 | 165 | 19 | 125 | 4 | M16 | 18 | 2,60 |
| 65 | 77,5 | 185 | 20 | 145 | 8* | M16 | 18 | 3,00 |
| 80 | 90,5 | 200 | 20 | 160 | 8 | M16 | 18 | 3,50 |
| 100 | 116,0 | 220 | 22 | 180 | 8 | M16 | 18 | 4,50 |
| 125 | 141,5 | 250 | 22 | 210 | 8 | M16 | 18 | 5,50 |
| 150 | 170,5 | 285 | 24 | 240 | 8 | M20 | 22 | 7,00 |
| 200 | 221,5 | 340 | 26 | 295 | 12 | M20 | 22 | 9,50 |
| 250 | 276,5 | 405 | 29 | 355 | 12 | M24 | 26 | 14,00 |
| 300 | 327,5 | 460 | 32 | 410 | 12 | M24 | 26 | 19,00 |
| 350 | 359,0 | 520 | 35 | 470 | 16 | M24 | 26 | 28,00 |
| 400 | 411,0 | 580 | 38 | 525 | 16 | M27 | 30 | 36,00 |
| 450 | 462,0 | 640 | 42 | 585 | 20 | M27 | 30 | 46,00 |
| 500 | 513,5 | 715 | 46 | 650 | 20 | M30 | 33 | 64,00 |
| 600 | 616,5 | 840 | 52 | 770 | 20 | M33 | 36 | 96,00 |

*Flansche auch mit 4 Löchern möglich - bitte bei Bestellung mit angeben

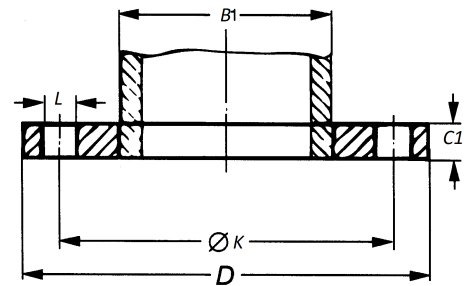
Alle Maße in mm
All sizes in mm

Glatte Flansche / Plane Welding Flanges

EN 1092-1 Typ 01 PN 40



Werkstoff / Material:
1.4541 / 1.4571



| Rohranschluss/ Tube | | Flansch / Flange | | | | | | | | | | Schrauben/screws | | | Gewicht/ weight |
|------------------------|-------|------------------|----|-----|-----|-----|------|----|----|-----|----|------------------|------|----|--------------------|
| DN | A | D | C2 | K | H2 | N1 | S | R1 | H3 | d1 | f1 | Anz. | Gew. | L | kg |
| 10 | 17,2 | 90 | 16 | 60 | 35 | 28 | 1,8 | 4 | 6 | 40 | 2 | 4 | M12 | 14 | 0,68 |
| 15 | 21,3 | 95 | 16 | 65 | 38 | 32 | 2,0 | 4 | 6 | 45 | 2 | 4 | M12 | 14 | 0,77 |
| 20 | 26,9 | 105 | 18 | 75 | 40 | 40 | 2,3 | 4 | 6 | 58 | 2 | 4 | M12 | 14 | 1,09 |
| 25 | 33,7 | 115 | 18 | 85 | 40 | 46 | 2,6 | 4 | 6 | 68 | 2 | 4 | M12 | 14 | 1,30 |
| 32 | 42,4 | 140 | 18 | 100 | 42 | 56 | 2,6 | 6 | 6 | 78 | 2 | 4 | M16 | 18 | 1,92 |
| 40 | 48,3 | 150 | 18 | 110 | 45 | 64 | 2,6 | 6 | 7 | 88 | 2 | 4 | M16 | 18 | 2,15 |
| 50 | 60,3 | 165 | 20 | 125 | 48 | 75 | 2,9 | 6 | 8 | 102 | 2 | 4 | M16 | 18 | 2,85 |
| 65 | 76,1 | 185 | 22 | 145 | 52 | 90 | 2,9 | 6 | 10 | 122 | 2 | 8 | M16 | 18 | 3,75 |
| 80 | 88,9 | 200 | 24 | 160 | 58 | 105 | 3,2 | 8 | 12 | 138 | 2 | 8 | M16 | 18 | 4,75 |
| 100 | 114,3 | 235 | 24 | 190 | 65 | 134 | 3,6 | 8 | 12 | 162 | 2 | 8 | M20 | 22 | 6,55 |
| 125 | 139,7 | 270 | 26 | 220 | 68 | 162 | 4,0 | 8 | 12 | 188 | 2 | 8 | M24 | 26 | 9,00 |
| 150 | 168,3 | 300 | 28 | 250 | 75 | 192 | 4,5 | 10 | 12 | 218 | 2 | 8 | M24 | 26 | 11,70 |
| 200 | 219,1 | 375 | 34 | 320 | 88 | 244 | 6,3 | 10 | 16 | 285 | 2 | 12 | M27 | 30 | 21,00 |
| 250 | 273,0 | 450 | 38 | 385 | 105 | 306 | 7,1 | 12 | 18 | 345 | 2 | 12 | M30 | 33 | 34,00 |
| 300 | 323,9 | 515 | 42 | 450 | 115 | 362 | 8,0 | 12 | 18 | 410 | 2 | 16 | M30 | 33 | 47,50 |
| 350 | 355,6 | 580 | 46 | 510 | 125 | 408 | 8,8 | 12 | 20 | 465 | 2 | 16 | M33 | 36 | 69,00 |
| 400 | 406,4 | 660 | 50 | 585 | 135 | 462 | 11,0 | 12 | 20 | 535 | 2 | 16 | M36 | 39 | 98,00 |
| 450 | 457,0 | 685 | 57 | 610 | 135 | 500 | 12,5 | 12 | 20 | 560 | 2 | 20 | M36 | 39 | 105,00 |
| 500 | 508,0 | 755 | 57 | 670 | 140 | 562 | 14,2 | 12 | 20 | 615 | 2 | 20 | M39 | 42 | 130,50 |
| 600 | 610,0 | 890 | 72 | 795 | 150 | 666 | 16,0 | 12 | 20 | 735 | 2 | 20 | M45 | 48 | 210,00 |

Alle Maße in mm
All sizes in mm