

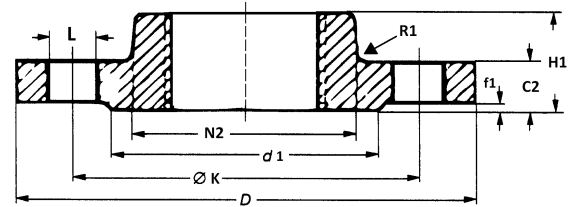
Gewindeflansche / Screwed Flanges

EN 1092-1 Typ 13



Werkstoff / Material:
1.4541 / 1.4571

Maße in mm



Rohr-Anschluss/Tube		PN	Flansch / Flange				Ansatz / Hub		Dichtleiste Raised face		Schrauben / Drilling			Gewicht/ Weight in kg
DN	Gewinde		D	C ₂	K	H ₁	N ₂	R ₁	d ₁	f ₁	Anzahl / Gewinde / Number	Thread	L	
10	3/8"	10/16/25/40	90	16	60	22	30	4	40	2	4	M12	14	0,60
15	1/2"	10/16/25/40	95	16	65	22	35	4	45	2	4	M12	14	0,70
20	3/4"	10/16/25/40	105	18	75	26	45	4	58	2	4	M12	14	1,00
25	1"	10/16/25/40	115	18	85	28	52	4	68	2	4	M12	14	1,25
32	1 1/4"	10/16/25/40	140	18	100	30	60	6	78	2	4	M16	18	1,90
40	1 1/2"	10/16/25/40	150	18	110	32	70	6	88	2	4	M16	18	2,05
50	2"	10/16	165	18	125	28	84	5	102	2	4	M16	18	3,00
65	2 1/2"	10/16	185	18	145	32	104	6	122	2	8b	M16	18	3,00
80	3"	10/16	200	20	160	34	118	6	138	2	8	M16	18	4,00
100	4"	10/16	220	20	180	40	140	8	158	2	8	M16	18	4,50
125	5"	10/16	250	22	210	44	168	8	188	2	8	M16	18	6,50
150	6"	10/16	285	22	240	44	194	10	212	2	8	M20	22	7,50

All items and specifications are subject to revision.

Alle Maße in mm
All sizes in mm