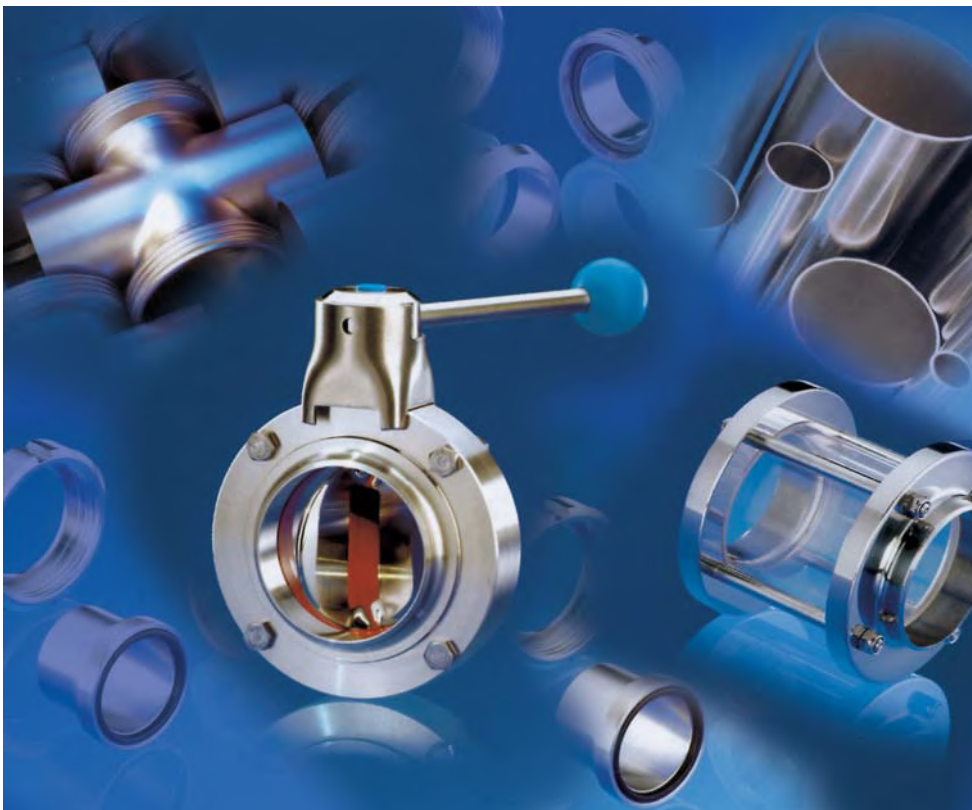


Food Industry



RO-FI Precision in Stainless Steel

Contents

Technical Informations	5
Calculation tables for drinks pipes	6
Pipeline lists (variants NW)	7
Tube Fittings DIN 11851 for pipe DIN 11850 (Series 2)	8-11
Accessories for screwing to DIN 11851	12-15
Caps and hose screwing	16-17
Hose screwing parts	18-19
Clamp parts	20-21
Clamp parts and SV-flanges	22-23
Alu-flanges similar DIN 2642	24-25
Flanges	26-27
Gaskets for flanges and threaded fittings	28-29
Threaded fittings	30-31
Reductions	32-33
Elbows to DIN 11852	34-35
Elbows Tee and deflection to DIN 11852	36-37
Elbow deflection und Tees	38-39
Tees reduced	40-41
Butterfly valve DIN-SS	42-43
Butterfly valve DIN-ZFA	42-43
Butterfly valve DIN-GG	42-43
Butterfly valve DIN-KK	42-43
Butterfly valve DIN-GS	44-45
Butterfly valve DIN-GK	44-45
Butterfly valve DIN-KS	44-45
Butterfly valve DIN-GF-ND 10	44-45
Butterfly valve DIN-CC	46-47
Butterfly valve DIN-GG Asep.-Con. DIN-11864/1	46-47
Butterfly valve DIN-GS Asep.-Con. DIN-11864/1	46-47
Butterfly valve DIN-GB Asep.-Con. DIN-11864/1	46-47
SV-Handle standard ball	48-49
SV-Scissor handle	48-49
SV-Handle infinitely	48-49
Plastic handle	48-49
SV-ZB-Bracket-hand-prox.-INI	50-51
SV-Handle for mech. limit switch	50-51
SV-ZB-Bracket-hand-limit switch	50-51
SV-Handle for proximity-INI (NI)	50-51
SV-Contakt plate hand-INI	52-53
SV-Valves	52-53
SV-ZB Female	52-53
SV-Drive-pneum. L/L	54-55
SV-Drive-pneum. L/F	54-55
SV-Seal-VMQ (Silikon)	56-57
SV-Seal-FPM (Viton)	56-57
SV-Seal-EPDM	56-57
SV-Seal-NBR (Perbunan)	56-57
Throttle valve	58-59
Plate check valve	58-59
Ball check valve	58-59
Tank level indicator	58-59
Strainers	60-61
Filter cartridge for strainers	60-61
Strainers DIN-GG	60-61
Canned	60-61

Contents

Look lantern DIN-SS	62-63
Look lantern DIN-GG	62-63
Look lantern DIN-GK	62-63
Look lantern DIN-KK	62-63
Look lantern inch-SS	64-65
Glass Cylinder Lamp for show	64-65
Gasket for latern show	64-65
Shatterproof polycarbonate	66-67
Shatterproof (perforated plate)	66-67
Technical information on display lantern	66
Sight glass with borosilicate	68-69
Sightglass-DIN-SS	68-69
DIN Sight Glass Weld m. Light	68-69
Lights for sight glass	70-71
Windscreen glass disc	70-71
Sight Glass Seal for	70-71
Look borosilicate glass	70-71
Spray head, perforation 180 ° downwards	72-73
Spray head, perforation 270 ° upwards	72-73
Spray head, perforation 360 °	72-73
Pipe clamp without shaft	74-75
Pipe clamp with shaft	74-75
Pipe bracket	74-75
Holding flange	74-75
Hook spanner, stainless steel	76-77
Spanner with stainless steel hinge	76-77
Hose Holder from profiles	76-77
Hose holder from round stock	76-77
Roller device	78-79
Tube roller for DIN Pipe	78-79
Pipe saw tools for DIN Pipe	78-79
Ratchet	80-81
Bell for welding	80-81
Arched back	80-81
Tin Ronde	80-81
Square tube	82-83
Outer end cap, plastic square tube	82-83
Round DIN 671	84-85
Dome port to support tube	84-85
Flat steel	84-85
Angle Steel	84-85
Scotch disk and strip	86-87
Welding wire	86-87
VA-Brush	86-87
Hexagon screw DIN 933 A2	88-89
Hex nut DIN 934 A2	88-89
Washer DIN 125 A2	88-89
K-plugs, plastic	90-91
S Plug, galvanized steel (HILTI)	90-91
Hexagon head wood screw DIN 571 A2	90-91

Technical informations

The basically used stainless steel austenitic steels are:

1.4301 (X 5 Cr Ni 18 10) 304 L

- the most engaged steel
- basically using in the food industry
- weld-able without preheating

1.4404 (X2 Cr Ni Mo 17 32 2) 316 L

- higher chemical consistency as 1.4301
- very good corrosion resistance (also compared to chloride ionic)
- very good to polish
- it's at the Cr-Ni-Mo- steels the most represent substance
- very good to weld without preheating

1.4435 (X Cr Ni Mo 18 014 3) 316 L

- minimal ferrite concentration and so a higher corrosion resistance as 1.4404
- using very often in the chemistry and pharmacy
- weld-able without preheating

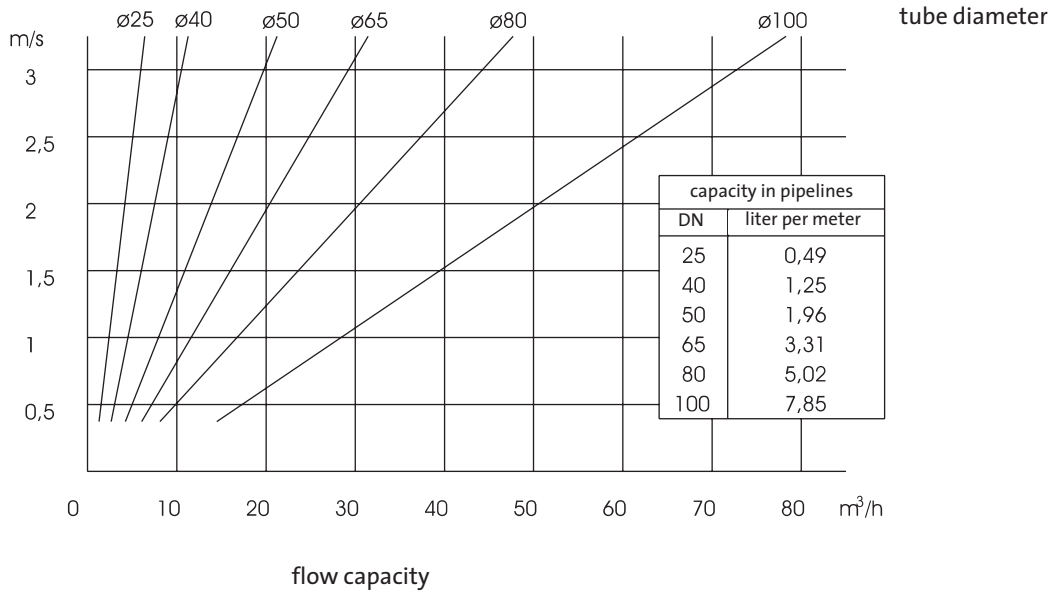
1.4571 (X 6 Cr Ni Mo Ti 17 12 2) 316 Ti

- will be displaced more and more of the material 1.4404
- very good corrosion properties and good weldable
- bad to polish and to machine

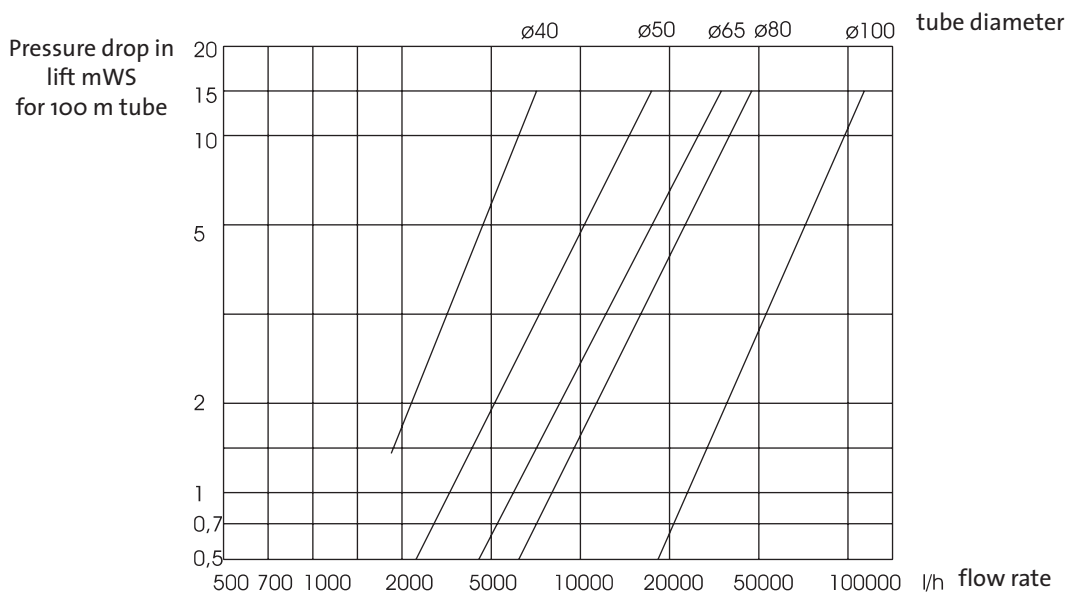
name	silicone (VMQ)	EPDM (Ethylen-Propylen-Dien-caoutchouc)	Viton (FPM)	Perbunan (NBR)	PTFE (Polytetrafluoräthylen)
working temperature	in water constant till 100 °C	long-term of - 40 °C till 140 °C	long-term of - 20 °C till 200 °C	long-term of - 25 °C to 110 °C	till 200 °C physiological harmless, adoption of -200 °C till +260 °C
type. application area	autoclave rapid till 120 °C - 130 °C high thermal capacity, good cold resistance, adequacy for the intended use for food, electrical predicates	autoclave till 130 °C good swelling resistance at: • dilute organic and inorganic acids, bases, polar organic media, oxidising media, bases and ketone.	autoclave rapid till 130 °C - 140 °C good swelling resistance at: • mineral oil, • vegetable and animal oils	autoclave rapid till 130 °C good swelling resistance at: • aliphatic carbon hydrides (like propane, butane, petrol, mineral oils)	good swelling resistance at almost all parts, surface clean and denying, because of this no lieable of arrears
limitation of use	high bulking at: • low-molecular ester and ether	do not use at • natural and animal oils	strong bulking at: • polar dissolvers like acetone, methyl ketone, ethyl acetate, diethyl aether and dioxin	not resistant at: • polar dissolvers	not resistant at: • liquid alkali metals and some fluoride in composition with high compression and temperature no rubbery elastic material
material approval	BGA/FDA	BGA/FDA	BGA/FDA	BGA/FDA	BGA/FDA

11.2007_1.000

Flow rate in pipelines



Fall of pressure in pipelines



Bench marks for flow rates

equipment		type of accomplishment	flow rate m/s	
water	drinking water and industrial water	intake line	till 1,5	
		pressure line	till 2,0	
	lake water	intake line	till 1,5	
		pressure line	till 2,0	
	warm water	recirculation in a closed loop	till 3,0	
		other	till 1,5	
ice water and brine	intake line	till 1,3		
	pressure line	till 2,5		
	return water	intake line	till 1,5	
refrigerant agent	ammoniac	liquid-line	till 1,5	
		gas-line	1,5 till 20,0	
	freon	liquid-line	0,4 till 0,8	
		gas-line	8,0 till 12,0	
	air	compressed air and sterile air	intake line	till 6,0
			pressure line	till 15,0
control line		2,0 till 5,0		
cleanser		intake line	till 1,5	
		pressure line	till 2,0	
product	milk	intake line	1,0 till 2,0	
		pressure line	2,0 till 3,0	
	cream	intake line	0,7 till 1,0	
		pressure line	1,0 till 2,0	
	yoghurt	intake line	0,5 till 0,8	
		pressure line	1,0 till 1,5	
	sparkling drinks	pressure line	0,5 till 1,0	
	mash	pressure line	1,2 till 1,5	
	flavour	pressure line	1,5 till 2,0	

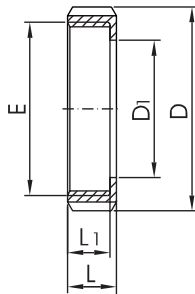
11.2007_1.000

Tube dimensions

tubes according to DIN 11850					DIN EN ISO 1127	ISO 2037/ BS 4825 Part 1	
DN	line 1	line 2	line 3	old series			
10	12 x 1,0	13 x 1,5	14 x 2,0	12 x 1,5	17,2 x 1,6		
15	18 x 1,0	19 x 1,5	20 x 2,0	18 x 1,5	21,3 x 1,6	1/2"	12,70 x 1,65
20	22 x 1,0	23 x 1,5	24 x 2,0	22 x 1,5	26,9 x 1,6	3/4"	19,05 x 1,65
25	28 x 1,0	29 x 1,5	30 x 2,0	28 x 1,5	33,7 x 2,0	1"	25,40 x 1,60
32	34 x 1,0	35 x 1,5	36 x 2,0	34 x 1,5	42,4 x 2,0	1 1/4"	31,80 x 1,60
40	40 x 1,0	41 x 1,5	42 x 2,0	40 x 1,5	48,3 x 2,0	1 1/2"	38,00 x 1,60
50	52 x 1,0	53 x 1,5	54 x 2,0	52 x 1,5	60,3 x 2,0	2"	51,00 x 1,60
65		70 x 2,0			76,1 x 2,3	2 1/2"	63,50 x 1,60
80		85 x 2,0			88,9 x 2,3	3"	76,10 x 1,60
100		104 x 2,0			114,3 x 2,6	4"	101,60 x 2,00
125		129 x 2,0			139,7 x 2,6		
150		154 x 2,0			168,3 x 2,6		
200		204 x 2,0			219,1 x 2,6		

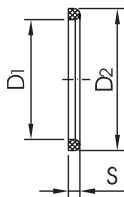
Bolting DIN 11851 for tubes to DIN 11850 (line 2)

Locknut DIN 11851



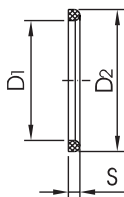
DN	D	D1	E	L	L1	W [kg]
10	38	19	Rd 28 x 1/8"	18	15	0,07
15	44	25	Rd 34 x 1/8"	18	15	0,08
20	54	31	Rd 44 x 1/6"	20	17	0,13
25	63	36	Rd 52 x 1/6"	21	18	0,18
32	70	42	Rd 58 x 1/6"	21	18	0,22
40	78	49	Rd 65 x 1/6"	21	18	0,25
50	92	62	Rd 78 x 1/6"	22	19	0,33
65	112	80	Rd 95 x 1/6"	25	21	0,55
75/3"	120	86,5	Rd 104 x 1/6"	26	21	0,65
80	127	94	Rd 110 x 1/4"	29	25	0,80
100	148	115	Rd 130 x 1/4"	31	26	1,08
125	178	138	Rd 160 x 1/4"	35	30	1,45
150	210	164	Rd 190 x 1/4"	40	34	1,88
200	260	215	Rd 240 x 1/4"	44	38	3,97

Gasket DIN 11851



DN	D1	D2	S
10	12	20	4,5
15	18	26	4,5
20	23	33	4,5
25	30	40	5
32	36	46	5
40	42	52	5
50	54	64	5
65	71	81	5
75/3"	78	88	5
80	85	95	5
100	104	114	6
125	130	142	7
150	155	167	7
200	Inquiry		

Gasket DIN 11851

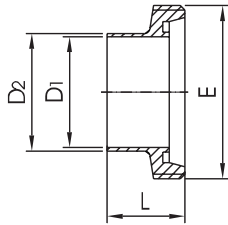


DN	D1	D2	S
10	12	20	4,5
15	18	26	4,5
20	23	33	4,5
25	30	40	5
32	36	46	5
40	42	52	5
50	54	64	5
65	71	81	5
75/3"	78	88	5
80	85	95	5
100	104	114	6
125	130	142	7
150	155	167	7
200	Inquiry		

112007_1.000

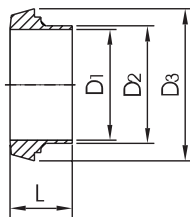
Bolting DIN 11851 for tubes to DIN 11850 (line 2)

Threaded socket DIN 11851 long



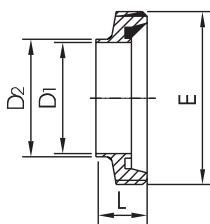
DN	D1	D2	E	L	W [kg]
10	10	13	Rd 28 x 1/8"	21	0,04
15	16	19	Rd 34 x 1/8"	21	0,05
20	20	23	Rd 44 x 1/6"	24	0,09
25	26	29	Rd 52 x 1/6"	29	0,11
32	32	35	Rd 58 x 1/6"	32	0,13
40	38	41	Rd 65 x 1/6"	33	0,16
50	50	53	Rd 78 x 1/6"	35	0,22
65	66	70	Rd 95 x 1/6"	40	0,35
80	81	85	Rd 110 x 1/4"	45	0,52
100	100	104	Rd 130 x 1/4"	54	0,67
125	125	129	Rd 160 x 1/4"	46	0,99
150	150	154	Rd 190 x 1/4"	50	1,71
200	Inquiry				

Cone nozzle DIN 11851 long



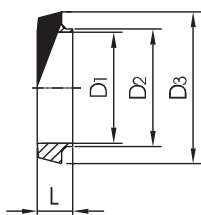
DN	D1	D2	D3	L	W [kg]
10	10	13	22,5	17	0,02
15	16	19	28,5	17	0,03
20	20	23	36,5	18	0,06
25	26	29	44	22	0,08
32	32	35	50	25	0,10
40	38	41	56	26	0,12
50	50	53	68,5	28	0,17
65	66	70	86	32	0,29
80	81	85	100	37	0,35
100	100	104	121	44	0,57
125	125	129	150	34	0,77
150	150	154	176	37	1,01
200	Inquiry				

Threaded socket DIN 11851 short



DN	D1	D2	E	L	W [kg]
10	10	13	Rd 28 x 1/8"	17	0,04
15	16	19	Rd 34 x 1/8"	17	0,05
20	20	23	Rd 44 x 1/6"	19	0,07
25	26	29	Rd 52 x 1/6"	22	0,10
32	32	35	Rd 58 x 1/6"	22	0,12
40	38	41	Rd 65 x 1/6"	22	0,14
50	50	53	Rd 78 x 1/6"	23	0,17
65	66	70	Rd 95 x 1/6"	25	0,26
80	81	85	Rd 110 x 1/4"	25	0,39
100	100	104	Rd 130 x 1/4"	30	0,53
125	125	129	Rd 160 x 1/4"	35,5	0,74
150	150	154	Rd 190 x 1/4"	40	1,36

Cone nozzle DIN 11851 short



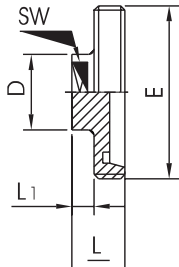
DN	D1	D2	D3	L	W [kg]
10	10	13	22,5	13	0,02
15	16	19	28,5	13	0,02
20	20	23	36,5	13	0,04
25	26	29	44	15	0,06
32	32	35	50	15	0,08
40	38	41	56	15	0,09
50	50	53	68,5	16	0,11
65	66	70	86	17	0,18
80	81	85	100	17	0,22
100	100	104	121	20	0,36
125	125	129	150	23,5	0,58
150	150	154	176	27	0,86

11.2007_1.000

www.rofi.de

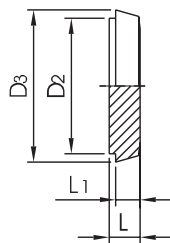
Accessories for screwing to DIN 11851

Threaded socket blind



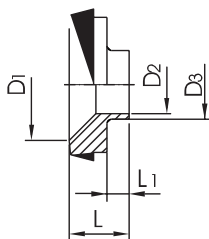
DN	D	E	SW	L	L1	W [kg]
10	22	Rd 28 x 1/8"	19	22	10	0,06
15	25	Rd 34 x 1/8"	22	22	10	0,09
20	25	Rd 44 x 1/6"	22	24	10	0,13
25	34	Rd 52 x 1/6"	27	24	10	0,19
32	34	Rd 58 x 1/6"	27	24	10	0,22
40	34	Rd 65 x 1/6"	27	24	10	0,25
50	34	Rd 78 x 1/6"	27	24	10	0,35
65	34	Rd 95 x 1/6"	27	26	10	0,64
80	34	Rd 110 x 1/4"	27	26	10	1,30
100	34	Rd 130 x 1/4"	27	30	10	2,10

Cone nozzle blind



DN	D2	D3	L	L1	W [kg]
10	18,8	22,5	9,5	3,5	0,02
15	24,8	28,5	9,5	3,5	0,04
20	30,8	36,5	11,5	3,5	0,07
25	35,8	44	13,5	3,5	0,13
32	41,8	50	13,5	3,5	0,17
40	48,8	56	13,5	3,5	0,22
50	61,8	68,5	14,5	3,5	0,35
65	79,8	86	16,5	4,5	0,67
80	93,8	100	16,5	4,5	0,92
100	114,8	121	20,5	5,5	1,34
125	137,8	150	22,5	5,5	1,68
150	163,8	176	24,5	6,5	4,30

Cone nozzle reduced

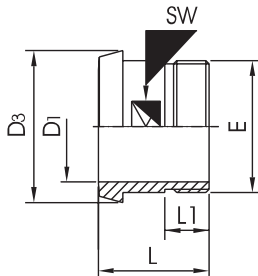


DN	D1	D2	D3	L	L1	W [kg]
25 / 15	26	16	19	22	9	0,11
32 / 15	32	16	19	23	9	0,14
32 / 20	32	20	23	23	9	0,14
32 / 25	32	26	29	20	6	0,12
40 / 15	38	16	19	25	10	0,20
40 / 20	38	20	23	25	10	0,21
40 / 25	38	26	29	20	5	0,17
40 / 32	38	32	35	23	8	0,17
50 / 25	50	26	29	28	14	0,31
50 / 32	50	32	35	23	9	0,29
50 / 40	50	38	41	26	12	0,27
65 / 25	66	26	29	32	16	0,51
65 / 32	66	32	35	32	16	0,52
65 / 40	66	38	41	26	10	0,54
65 / 50	66	50	53	27	11	0,45
80 / 40	81	38	41	36	20	0,75
80 / 50	81	50	53	30	14	0,66
80 / 65	81	66	70	31	15	0,50
100 / 50	100	50	53	40	20	1,20
100 / 65	100	66	70	40	20	1,17
100 / 80	100	81	85	42	22	1,06
125 / 100	125	100	104	56	34	1,35
150 / 100	150	100	04	50	26	1,65

112007_1.000

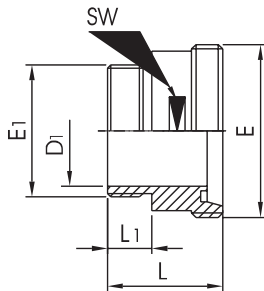
Accessories for screwing to DIN 11851

Cone-Screw socket



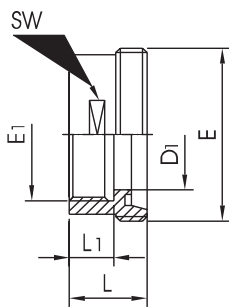
DN	D1	D3	L	L1	E	SW	W[kg]
10	10	22	38	14	R 3/8"	14	0,03
15	16	28	38	14	R 1/2"	19	0,05
20	20	36	40	14	R 3/4"	27	0,09
25	26	44	50	20	R 1"	30	0,14
32	32	50	50	20	R 1 1/4"	36	0,24
40	38	56	50	20	R 1 1/2"	44	0,27
50	50	68	50	20	R 2"	55	0,35
65	66	86	55	22	R 2 1/2"	70	0,53
80	81	100	60	25	R 3"	88	0,67
100	100	121	70	30	R 4"	110	1,22

Thread-Screw socket



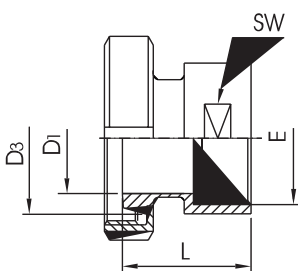
DN	D1	L	L1	E	E1	SW	W [kg]
10	10	40	14	Rd 28 x 1/8"	R 3/8"	17	0,06
15	16	40	14	Rd 34 x 1/8"	R 1/2"	24	0,08
20	20	42	14	Rd 44 x 1/6"	R 3/4"	30	0,14
25	26	48	20	Rd 52 x 1/6"	R 1"	41	0,28
32	32	48	20	Rd 58 x 1/6"	R 1 1/4"	46	0,35
40	38	50	20	Rd 65 x 1/6"	R 1 1/2"	50	0,40
50	50	52	20	Rd 78 x 1/6"	R 2"	65	0,53
65	66	56	22	Rd 95 x 1/6"	R 2 1/2"	80	0,72
80	80	66	25	Rd 110 x 1/4"	R 3"	95	1,01
100	100	72	30	Rd 130 x 1/4"	R 4"	117	1,54

Thread-Unscrew socket



DN	D1	L	L1	E	E1	SW	W [kg]
10	10	30	14	Rd 28 x 1/8"	R 3/8"	19	0,06
15	16	30	14	Rd 34 x 1/8"	R 1/2"	24	0,07
20	20	30	14	Rd 44 x 1/6"	R 3/4"	30	0,11
25	26	35	20	Rd 52 x 1/6"	R 1"	41	0,22
32	32	35	20	Rd 58 x 1/6"	R 1 1/4"	46	0,23
40	38	35	20	Rd 65 x 1/6"	R 1 1/2"	50	0,24
50	50	35	20	Rd 78 x 1/6"	R 2"	65	0,37
65	66	38	22	Rd 95 x 1/6"	R 2 1/2"	80	0,54
80	80	43	25	Rd 110 x 1/4"	R 3"	95	0,72
100	100	50	30	Rd 130 x 1/4"	R 4"	117	0,91

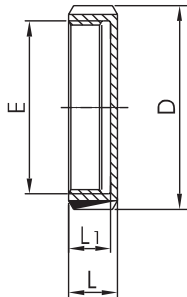
Cone-Unscrew socket



DN	D1	D3	L	E	SW	W [kg]
10	10	22,5	39	R 3/8"	19	0,15
15	16	28,5	41	R 1/2"	24	0,20
20	20	36,5	42	R 3/4"	30	0,29
25	26	44	52	R 1"	41	0,54
32	32	50	55	R 1 1/4"	46	0,56
40	38	56	56	R 1 1/2"	50	0,59
50	50	68,5	58	R 2"	65	0,86
65	66	86	64	R 2 1/2"	80	1,36
80	81	100	74	R 3"	95	1,61
100	100	121	89	R 4"	117	2,34

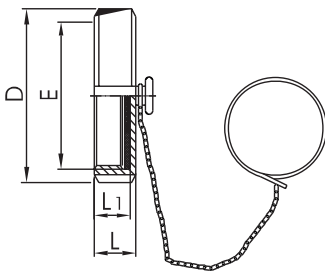
Caps and hose-screwing

Blind nut



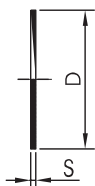
DN	D	L	L1	E	W [kg]
10	38	18	15	Rd 28 x 1/8"	0,08
15	44	18	15	Rd 34 x 1/8"	0,10
20	54	20	17	Rd 44 x 1/6"	0,14
25	63	21	18	Rd 52 x 1/6"	0,19
32	70	21	18	Rd 58 x 1/6"	0,23
40	78	21	18	Rd 65 x 1/6"	0,26
50	92	22	19	Rd 78 x 1/6"	0,38
65	112	25	21	Rd 95 x 1/6"	0,66
75/3"	120	26	21	Rd 104 x 1/6"	0,69
80	127	29	25	Rd 110 x 1/4"	1,00
100	148	31	26	Rd 130 x 1/4"	1,40
125	178	35	30	Rd 160 x 1/4"	1,97
150	210	40	34	Rd 190 x 1/4"	2,87
200	260	44	38	Rd 240 x 1/4"	5,24

Blind nut completely



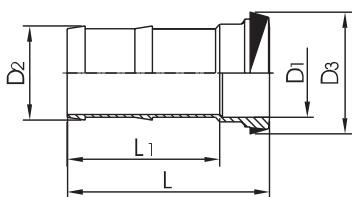
DN	D	L	L1	E	W [kg]
10	38	18	15	Rd 28 x 1/8"	0,12
15	44	18	15	Rd 34 x 1/8"	0,15
20	54	20	17	Rd 44 x 1/6"	0,19
25	63	21	18	Rd 52 x 1/6"	0,25
32	70	21	18	Rd 58 x 1/6"	0,29
40	78	21	18	Rd 65 x 1/6"	0,33
50	92	22	19	Rd 78 x 1/6"	0,46
65	112	25	21	Rd 95 x 1/6"	0,85
75/3"	120	26	21	Rd 104 x 1/6"	0,90
80	127	29	25	Rd 110 x 1/4"	1,11
100	148	31	26	Rd 130 x 1/4"	1,53
125	178	35	30	Rd 160 x 1/4"	2,12
150	210	40	34	Rd 190 x 1/4"	3,05
200	260	44	38	Rd 240 x 1/4"	5,22

Grommets for blind nut



DN	D	S	S (for PTFE)
10	28	3	1,5
15	34	3	1,5
20	44	3	1,5
25	52	3	1,5
32	58	3	1,5
40	65	3	1,5
50	78	3	1,5
65	95	3	1,5
75/3"	104	3	1,5
80	110	3	1,5
100	130	3	1,5
125	160	4	1,5
150	190	4	1,5

Hose cone nozzles DIN 11854

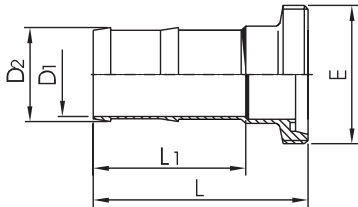


DN	D1	D2	D3	L	L1	W [kg]
10	10	15	22,5	50	33	0,04
15	16	21	28,5	60	43	0,06
20	20	26	36,5	70	52	0,13
25	22	28	44	76	54	0,19
32	29	35	50	85	60	0,27
40	37	43	56	101	75	0,42
50	47	53	68,5	114	86	0,58
65	61	69	86	134	102	1,08
80	75	85	100	156	119	1,32
100	95	105	121	175	131	2,13

112007_1.000

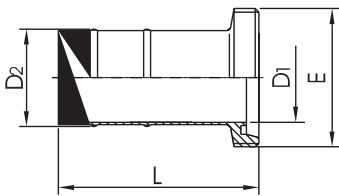
Hose screwing

Hose-Threaded socket DIN 11854



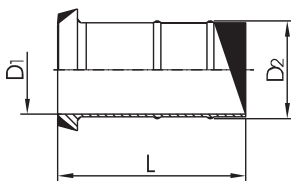
DN	D1	D2	L	L1	E	W [kg]
10	10	15	54	33	Rd 28 x 1/8"	0,05
15	16	21	64	43	Rd 34 x 1/8"	0,08
20	20	26	76	52	Rd 44 x 1/6"	0,17
25	22	28	83	54	Rd 52 x 1/6"	0,23
32	29	35	92	60	Rd 58 x 1/6"	0,33
40	37	43	108	75	Rd 65 x 1/6"	0,52
50	47	53	121	86	Rd 78 x 1/6"	0,66
65	61	69	142	102	Rd 95 x 1/6"	1,14
80	75	85	164	119	Rd 110 x 1/4"	1,50
100	95	105	185	131	Rd 130 x 1/4"	2,40

Hose-Threaded socket with tubetulle



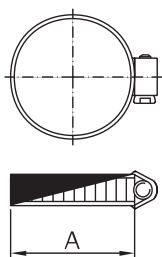
DN	D1	D2	L	E	W [kg]
15	16	19,5	67	Rd 34 x 1/8"	0,07
20	20	23,5	69	Rd 44 x 1/6"	0,11
25	26	29,5	82	Rd 52 x 1/6"	0,14
32	32	36	92	Rd 58 x 1/6"	0,20
40	38	42	102	Rd 65 x 1/6"	0,23
50	50	54	113	Rd 78 x 1/6"	0,32
65	66	72	125	Rd 95 x 1/6"	0,67
80	81	88	135	Rd 110 x 1/4"	0,98
100	100	100	150	Rd 130 x 1/4"	1,07

Hose-Cone nozzle with tubetulle



DN	D1	D2	L	W [kg]
15	16	19,5	63	0,04
20	20	23,5	63	0,06
25	26	29,5	75	0,11
32	32	36	85	0,14
40	38	42	95	0,17
50	50	54	106	0,25
65	66	72	117	0,58
80	81	88	127	0,66
100	100	100	140	0,94

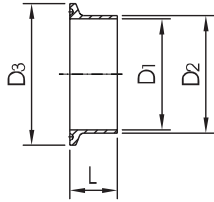
Hose clamp



A Ø Area	W [kg]
12 - 20	0,02
16 - 25	0,02
20 - 32	0,02
25 - 40	0,02
32 - 50	0,03
40 - 60	0,03
50 - 70	0,03
60 - 80	0,04
70 - 90	0,04
80 - 100	0,04
90 - 110	0,04
100 - 120	0,05

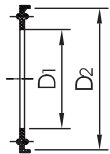
Clampparts

Weld Clampsockets DIN 32676



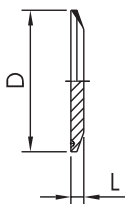
DN	D1	D2	D3	L	W [kg]
10	10	13	34	18	0,03
15	16	19	34	18	0,03
20	20	23	34	18	0,03
25	26	29	50,5	21,5	0,07
32	32	35	50,5	21,5	0,07
40	38	41	50,5	21,5	0,07
50	50	53	64	21,5	0,07
65	66	70	91	28	0,10
80	81	85	106	28	0,20
100	100	104	119	28	0,22
125	125	129	155	28	0,52
150	150	154	183	28	0,70

Gasket DIN 32676



DN	D1	D2
10	10,2	34
15	16,2	34
20	20,2	34
25	26,2	50,5
32	32,2	50,5
40	38,2	50,5
50	50,2	64
65	66,2	91
80	81,2	106
100	100,2	119
125	125,2	155
150	150,2	183

Clampcover

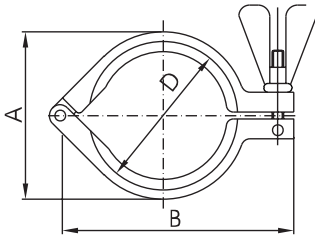


DN	D	L	W [kg]
10-20	34	6,5	0,03
25-40	50,5	6,5	0,08
50	64	6,5	0,13
65	91	6,5	0,31
80	106	6,5	0,47
100	119	8	0,61
125	155	8	1,48
150	183	8	2,11

112007_1.000

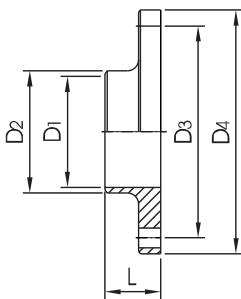
Clampparts and SV-Flange connection

Clamp, solid



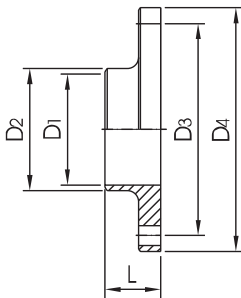
DN	A	B	D	W [kg]
10-20	45	63	34	0,10
25-40	64	88	50,5	0,31
50	77	105	64	0,34
65	104	137	91	0,53
80	119	155	106	0,59
100	132	168	119	0,60
125	170	205	155	1,50
150	200	235	183	1,80

SV-flange without nut



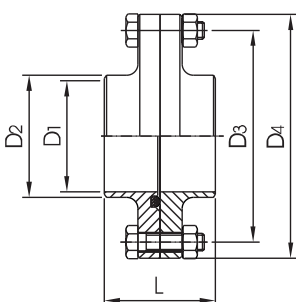
DN	D1	D2	D3	D4	L	W [kg]
10	10	15	44	62	20	0,20
15	16	21	50	68	20	0,26
20	20	25	59	75	20	0,29
25	26	31	73	87	20	0,39
32	32	37	78	92	20	0,46
40	38	43	82,5	97	25	0,47
50	50	55	95,5	110	25	0,59
65	66	72	112,5	127	25	0,75
80	81	87	127,5	142	30	1,28
100	100	106	147,5	162	30	1,72
125	125	132	180	200	40	2,87
150	150	157	210	230	45	3,85

SV-Flange with nut



DN	D1	D2	D3	D4	L	W [kg]
10	10	15	44	62	20	0,20
15	16	21	50	68	20	0,26
20	20	25	59	75	20	0,29
25	26	31	73	87	20	0,39
32	32	37	78	92	20	0,46
40	38	43	82,5	97	25	0,47
50	50	55	95,5	110	25	0,59
65	66	72	112,5	127	25	0,75
80	81	87	127,5	142	30	1,28
100	100	106	147,5	162	30	1,72
125	125	132	180	200	40	2,87
150	150	157	210	230	45	3,85

SV-Flange connection



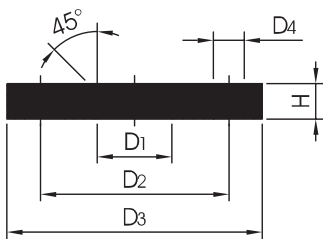
DN	D1	D2	D3	D4	L	W [kg]
10	10	15	44	62	40	0,40
15	16	21	50	68	40	0,52
20	20	25	59	75	40	0,58
25	26	31	73	87	40	0,78
32	32	37	78	92	40	0,92
40	38	43	82,5	97	50	0,94
50	50	55	95,5	110	50	1,18
65	66	72	112,5	127	50	1,50
80	81	87	127,5	142	60	2,56
100	100	106	147,5	162	60	3,44
125	125	132	180	200	80	5,74
150	150	157	210	230	90	7,70

11.2007_1.000

www.rofi.de

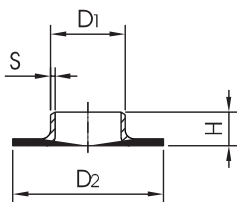
Alu-Flange connection similar DIN 2642

Alu-loose flange, simi. DIN 2642/PN10



DN	D1	D2	D3	D4	H	W [kg]
10	16	60	90	14	14	0,59
10	19	60	90	14	14	0,59
15	22	65	95	14	14	0,68
15	24	65	95	14	14	0,68
20	28	75	105	14	14	0,80
20	30	75	105	14	14	0,80
25	33	85	115	14	16	1,11
25	36	85	115	14	16	1,11
32	42	100	140	18	16	1,64
32	46	100	140	18	16	1,64
40	48	110	150	18	16	1,86
40	54	110	150	18	16	1,86
50	60	125	165	18	16	2,20
50	65	125	165	18	16	2,20
65	81	145	185	18	16	2,62
80	94	160	200	18	18	3,32
100	113	180	220	18	18	3,67
100	119	180	220	18	18	3,67
125	138	210	250	18	18	4,54
125	144	210	250	18	18	4,54
150	164	240	285	22	18	5,60
150	173	240	285	22	18	5,60
200	225	295	340	22	20	7,46

Welding neck flange, simi. DIN 2642/PN10

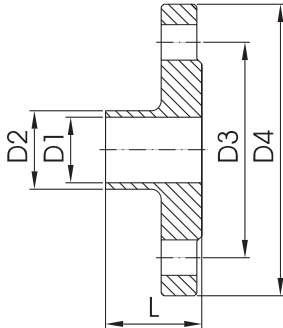


DN	D1	D2	H	S
15	18	45	9	1,5
15	19	45	9	2
20	23	58	12	1,5
25	28	68	15	1,5
25	29	68	15	2
32	35	78	15	1,5
40	40	88	17	1,5
50	52	102	20	1,5
50	53	102	21	1,5
65	70	122	23	2
80	85	140	23	2
100	104	160	28	2
125	129	190	30	2
150	154	212	31	2
200	204	270	30	2

112007_1.000

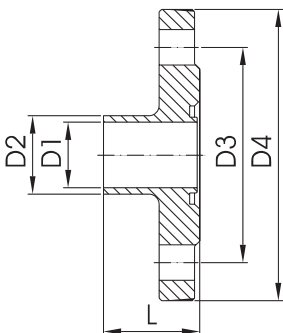
Flanges

Welding neck flange



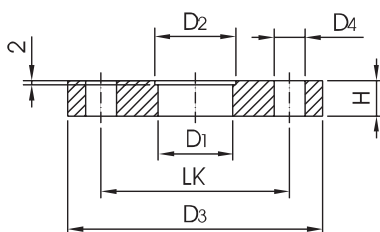
DN	D1	D2	D3	D4	L	W [kg]
10	10	15	60	90	35	0,51
15	16	21	65	95	35	0,62
20	20	25	75	105	38	0,62
25	26	31	85	115	38	1,00
32	32	37	100	140	40	1,51
40	38	43	110	150	42	1,62
50	50	55	125	165	45	2,14
65	66	72	145	185	45	2,66
80	81	87	160	200	50	3,17
100	100	106	180	220	52	4,04
125	125	133	210	250	55	6,45
150	150	159	240	285	55	8,10

Welding neck flange with nut



DN	D1	D2	D3	D4	L	W [kg]
10	10	15	60	90	35	0,51
15	16	21	65	95	35	0,62
20	20	25	75	105	38	0,62
25	26	31	85	115	38	1,00
32	32	37	100	140	40	1,51
40	38	43	110	150	42	1,62
50	50	55	125	165	45	2,14
65	66	72	145	185	45	2,66
80	81	87	160	200	50	3,17
100	100	106	180	220	52	4,04
125	125	133	210	250	55	6,45
150	150	159	240	285	55	8,10

Plane welding flange ND 10



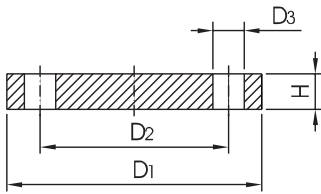
DN	D1	D2	LK	D3	D4	H	W [kg]
10	10	12,2	60	90	14/4	14	0,50
10	10	13,2	60	90	14/4	14	0,50
15	16	18,2	65	95	14/4	14	0,60
15	16	19,2	65	95	14/4	14	0,60
20	20	22,2	75	105	14/4	14	0,85
20	20	23,2	75	105	14/4	14	0,85
25	26	28,2	85	115	14/4	14	1,11
25	26	29,2	85	115	14/4	14	1,11
32	32	34,2	100	140	18/4	14	1,64
32	32	35,2	100	140	18/4	14	1,64
40	38	40,2	110	150	18/4	14	1,80
40	38	41,2	110	150	18/4	14	1,80
50	50	52,2	125	165	18/4	14	2,30
50	50	53,2	125	165	18/4	14	2,30
65	66	70,5	145	185	18/4	14	2,88
80	81	85,5	160	200	18/8	16	3,20
100	100	104,5	180	220	18/8	16	4,00
125	125	129,5	210	250	18/8	20	5,00
150	150	154,5	240	285	22/8	20	6,70
200	200	205,0	295	340	22/8	24	9,00

11.2007_1.000

www.rofi.de

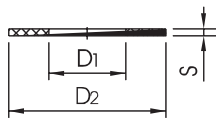
Sealing for flanges and threaded fittings

Blind flange



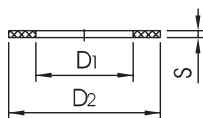
DN	D1	D2	D3	H	PN	W [kg]
10	90	60	14	14	16	0,63
15	95	65	14	14	16	0,72
20	105	75	14	16	16	1,01
25	115	85	14	16	16	1,23
32	140	100	18	16	16	1,80
40	150	110	18	16	16	2,09
50	165	125	18	18	16	2,88
65	185	145	18	18	16	3,66
80	200	160	18	20	16	4,77
100	220	180	18	20	16	5,65
125	250	210	18	22	16	8,42
150	285	240	22	22	16	10,40
200	340	295	22	24	10	16,10

Flange sealing DIN 2690/PN16



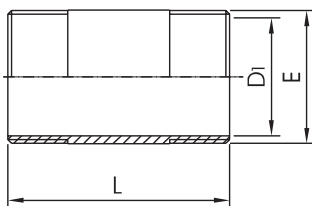
DN	D1	D2	S	S (EPDM)
10	18	45	2	3
15	22	50	2	3
20	28	60	2	3
25	35	70	2	3
32	43	82	2	3
40	49	92	2	3
50	61	107	2	3
65	77	127	2	3
80	90	142	2	3
100	115	162	2	3
125	141	192	2	3
150	169	218	2	3
200	220	273	2	3

Flare sealing PN10



DN	D1	D2	S
10	14	40	3
15	18	45	3
20	23	58	3
25	30	68	3
32	39	78	3
40	45	88	4
50	56	102	4
65	71	122	4
80	84	138	4
100	109	158	4
125	135	188	4
150	160	212	4
200	220	268	4

Double pipe nipple

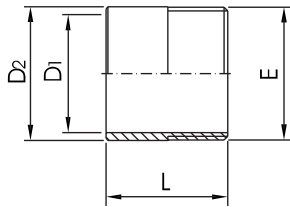


DN	E	D1	L	W [kg]
6	1/8"	6,2	30	0,01
8	1/4"	8,9	30	0,01
10	3/8"	12,6	40	0,02
15	1/2"	16,1	60	0,04
20	3/4"	21,7	60	0,04
25	1"	27,3	60	0,06
32	1 1/4"	36,0	80	0,13
40	1 1/2"	41,9	80	0,16
50	2"	53,1	100	0,26
65	2 1/2"	68,9	100	0,33
80	3"	80,9	120	0,47
100	4"	105,3	120	0,66

112007_1.000

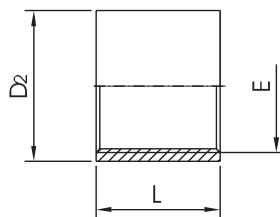
Gewindefittings

Weld nipples with pipe threads



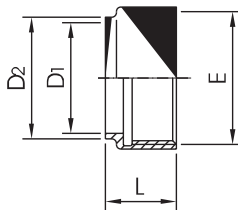
DN	E	D1	D2	L	W [kg]
6	1/8"	6,2	10,2	30	0,02
8	1/4"	8,9	13,5	30	0,02
10	3/8"	12,6	17,2	30	0,03
15	1/2"	16,1	21,3	35	0,04
20	3/4"	21,7	26,9	40	0,06
25	1"	27,3	33,7	40	0,10
32	1 1/4"	36,0	42,4	50	0,15
40	1 1/2"	41,9	48,3	50	0,16
50	2"	53,1	60,3	55	0,22
65	2 1/2"	68,9	76,1	60	0,42
80	3"	80,9	88,9	65	0,68
100	4"	105,3	114,3	90	0,97

Sleeve DIN 2986 with pipe threads



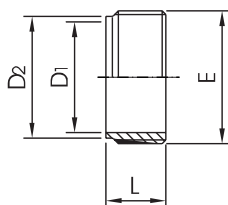
DN	E	D2	L	W [kg]
10	3/8"	21,3	26	0,03
15	1/2"	26,4	34	0,08
20	3/4"	31,8	36	0,11
25	1"	39,5	43	0,17
32	1 1/4"	48,3	48	0,32
40	1 1/2"	54,5	48	0,40
50	2"	68,3	56	0,48
65	2 1/2"	82	65	1,20
80	3"	95	71	1,57
100	4"	122	83	2,40

Weld nipples G3



DN	E	D1	D2	L	W [kg]
6	1/8"	6	9	18	0,04
8	1/4"	8	11	20	0,04
10	3/8"	10	13	20	0,06
15	1/2"	15	19	22	0,09
20	3/4"	20	24	22	0,10
25	1"	26	31	27	0,21
32	1 1/4"	32	37	32	0,23
40	1 1/2"	38	43	32	0,27
50	2"	50	55	32	0,33
65	2 1/2"	66	71	38	0,43
80	3"	81	86	45	0,50
100	4"	100	106	55	0,65

Weld nipples G2



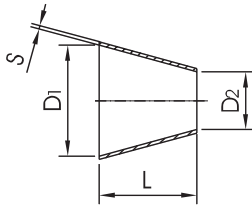
DN	E	D1	D2	L	W [kg]
6	1/8"	6	9	15	0,01
8	1/4"	8	11	17	0,01
10	1/4"	10	13	17	0,01
15	1/2"	15	18	20	0,02
20	3/4"	20	24	20	0,03
25	1"	26	30	22	0,04
32	1 1/4"	32	37	27	0,09
40	1 1/2"	38	43	27	0,10
50	2"	50	55	27	0,13
65	2 1/2"	66	71	31	0,16
80	3"	81	85	37	0,18
100	4"	100	106	47	0,65

11.2007_1.000

www.rofi.de

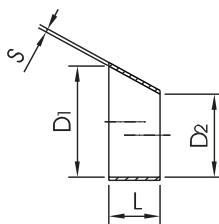
Reducing pieces

Reducing piece concentric DIN 11852



DN	D1	D2	S	L	W [kg]
15-10	16	10	1,5	11	0,01
20-10	20	10	1,5	18	0,02
20-15	20	16	1,5	7	0,01
25-10	26	10	1,5	28	0,02
25-15	26	16	1,5	18	0,02
25-20	26	20	1,5	11	0,01
32-15	32	16	1,5	28	0,03
32-20	32	20	1,5	22	0,02
32-25	32	26	1,5	11	0,02
40-20	38	20	1,5	33	0,04
40-25	38	26	1,5	22	0,03
40-32	38	32	1,5	11	0,04
50-25	50	26	1,5	44	0,08
50-32	50	32	1,5	33	0,08
50-40	50	38	1,5	22	0,09
65-32	66	32	2	62	0,12
65-40	66	38	2	51	0,11
65-50	66	50	2	29	0,09
80-40	81	38	2	78	0,16
80-50	81	50	2	56	0,12
80-65	81	66	2	27	0,11
100-50	100	50	2	90	0,29
100-65	100	66	2	61	0,28
100-80	100	81	2	34	0,17
125-65	125	66	2	106	0,44
125-80	125	81	2	79	0,41
125-100	125	100	2	45	0,55
150-80	150	81	2	124	0,50
150-100	150	100	2	90	0,45
150-125	150	125	2	45	0,40
200-150	200	150	2	90	0,79

Reducing piece eccentric DIN 11852

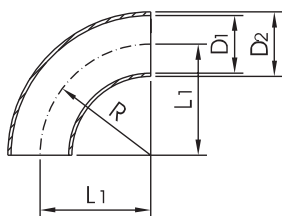


DN	D1	D2	S	L	W [kg]
15-10	16	10	1,5	16,5	0,01
20-10	20	10	1,5	27,5	0,02
20-15	20	16	1,5	11	0,01
25-10	26	10	1,5	44	0,01
25-15	26	16	1,5	27,5	0,02
25-20	26	20	1,5	16,5	0,03
32-15	32	16	1,5	44	0,03
32-20	32	20	1,5	33	0,03
32-25	32	26	1,5	16,5	0,04
40-15	38	16	1,5	60,5	0,05
40-20	38	20	1,5	49,5	0,04
40-25	38	26	1,5	33	0,05
40-32	38	32	1,5	16,5	0,07
50-25	50	26	1,5	66	0,08
50-32	50	32	1,5	49,5	0,11
50-40	50	38	1,5	33	0,07
65-40	66	40	2	71,5	0,17
65-50	66	50	2	44	0,11
80-50	81	50	2	85	0,21
80-65	81	66	2	41,2	0,14
100-50	100	50	2	137,5	0,80
100-65	100	66	2	93,5	0,34
100-80	100	81	2	52,5	0,20
125-80	125	81	2	121	0,38
125-100	125	100	2	68,5	0,28
150-100	150	100	2	137,5	0,53
150-125	150	125	2	68,5	0,29

112007_1.000

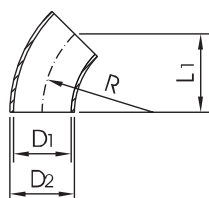
Elbow to DIN 11852

Elbow SS-90° DIN 11852



DN	D1	D2	L1	R	W [kg]
10	9	12	26	26	0,01
10	10	13	26	26	0,01
15	15	18	35	35	0,02
15	16	19	35	35	0,02
20	19	22	40	40	0,04
20	20	23	40	40	0,04
25	25	28	50	50	0,05
25	26	29	50	50	0,05
32	31	34	55	55	0,08
32	32	35	55	55	0,08
40	37	40	60	60	0,10
40	38	41	60	60	0,10
50	49	52	70	70	0,17
50	50	53	70	70	0,17
65	66	70	80	80	0,39
80	81	85	90	90	0,57
100	100	104	100	100	1,17
125	125	129	187,5	187,5	1,90
150	150	154	225	225	2,72
200	200	204	300	300	4,75
250	250	254	375	375	7,50

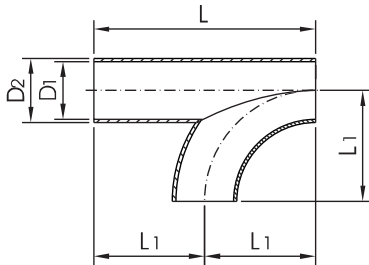
Elbow SS-45° DIN 11852



DN	D1	D2	L1	R	W [kg]
10	9	12	17	26	0,01
10	10	13	17	26	0,01
15	15	18	23	35	0,01
15	16	19	23	35	0,01
20	19	22	27	40	0,02
20	20	23	27	40	0,02
25	25	28	34	50	0,03
25	26	29	34	50	0,03
32	31	34	37	55	0,04
32	32	35	37	55	0,04
40	37	40	41	60	0,05
40	38	41	41	60	0,05
50	49	52	48	70	0,09
50	50	53	48	70	0,09
65	66	70	55	80	0,19
80	81	85	62	90	0,26
100	100	104	69	100	0,58
125	125	129	131	187,5	0,99
150	150	154	157	225	1,36
200	200	204	300	300	2,38

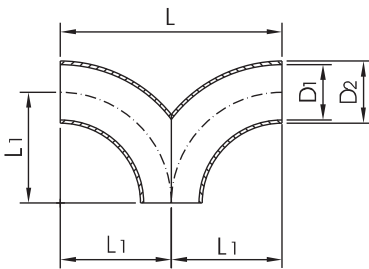
Elbows tee and bent deflection to DIN 11852

Tee-Elbows SSS



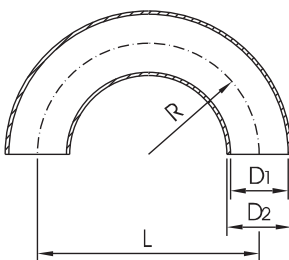
DN	D1	D2	L	L1	W [kg]
25	25	28	100	50	0,10
25	26	29	100	50	0,10
32	31	34	110	55	0,13
32	32	35	110	55	0,13
40	37	40	120	60	0,21
40	38	41	120	60	0,21
50	49	52	140	70	0,29
50	50	53	140	70	0,29
65	66	70	160	80	0,62
80	81	85	180	90	0,85
100	100	104	200	100	1,62

Double Tee-Elbows SSS



DN	D1	D2	L	L1	W [kg]
25	25	28	100	50	0,10
25	26	29	100	50	0,10
32	31	34	110	55	0,13
32	32	35	110	55	0,13
40	37	40	120	60	0,21
40	38	41	120	60	0,21
50	49	52	140	70	0,29
50	50	53	140	70	0,29
65	66	70	160	80	0,62
80	81	85	180	90	0,85
100	100	104	200	100	1,62

Elbows SS 180° DIN 11852

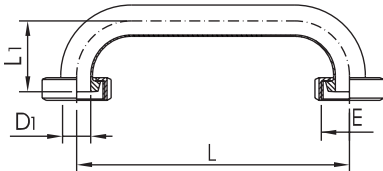


DN	D1	D2	L	L1	W [kg]
10	9	12	52	26	0,01
10	10	13	52	26	0,01
15	15	18	70	35	0,03
15	16	19	70	35	0,03
20	19	22	80	40	0,06
20	20	23	80	40	0,06
25	25	28	100	50	0,10
25	26	29	100	50	0,10
32	31	34	110	55	0,16
32	32	35	110	55	0,16
40	37	40	120	60	0,23
40	38	41	120	60	0,23
50	49	52	140	70	0,24
50	50	53	140	70	0,24
65	66	70	160	80	0,97
80	81	85	180	90	1,13
100	100	104	200	100	2,34
125	125	129	375	187,5	3,80
150	150	154	450	225	5,44

112007_1.000

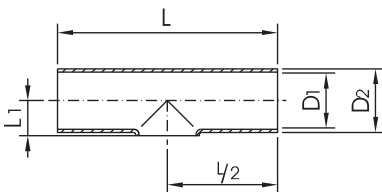
Elbows bent deflection and Tees

Elbows bent deflection KM-KM



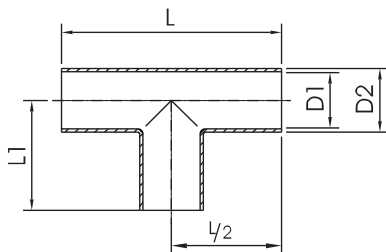
DN	D1	E	L	L1	W [kg]
25	26	Rd 52 x 1/6"	250	65	0,66
32	32	Rd 58 x 1/6"	300	70	0,99
40	38	Rd 65 x 1/6"	300	75	1,18
50	50	Rd 78 x 1/6"	400	86	1,64
65	66	Rd 95 x 1/6"	500	97	3,37
80	81	Rd 110 x 1/4"	600	107	4,91
100	100	Rd 130 x 1/4"	700	120	7,82

Tees short SSS DIN 11852



DN	D1	D2	L	L1	W [kg]
25	25	28	100	16	0,09
25	26	29	100	16	0,09
32	31	34	110	19	0,12
32	32	35	110	19,5	0,12
40	37	40	120	22	0,15
40	38	41	120	23	0,15
50	49	52	140	29	0,24
50	50	53	140	30	0,24
65	66	70	160	40	0,46
80	81	85	180	47,5	0,68
100	100	104	200	58,5	0,92
125	125	129	375	74,0	1,97
150	150	154	450	90	2,89
200	200	204	600	115	5,46

Tees long SSS



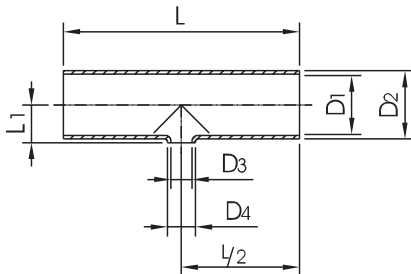
DN	D1	D2	L	L1	W [kg]
25	25	28	100	50	0,10
25	26	29	100	50	0,10
32	31	34	110	55	0,13
32	32	35	110	55	0,13
40	37	40	120	60	0,21
40	38	41	120	60	0,21
50	49	52	140	70	0,29
50	50	53	140	70	0,29
65	66	70	160	80	0,62
80	81	85	180	90	0,85
100	100	104	200	100	1,62
125	125	129	375	187,5	2,71
150	150	154	450	225	3,88
200	200	204	600	300	7,10

11.2007_1.000

www.rofi.de

Tees reduced

Tees reduced SSS

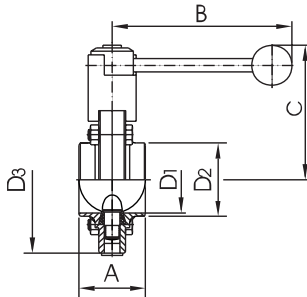


DN	D1	D2	D3	D4	L	L1	W [kg]
25/20	25	28	19	22	100	16,5	0,09
25/20	26	29	20	23	100	17	0,09
32/25	31	34	25	28	110	19	0,12
32/25	32	35	26	29	110	19,5	0,12
40/25	37	40	25	28	120	22	0,15
40/25	38	41	26	29	120	22,5	0,15
40/32	37	40	31	34	120	22	0,15
40/32	38	41	32	35	120	22,5	0,15
50/25	49	52	25	28	140	29	0,24
50/25	50	53	26	29	140	29,5	0,24
50/40	49	52	37	41	140	29	0,24
50/40	50	53	38	41	140	29,5	0,24
65/25	66	70	25	28	160	39	0,47
65/25	66	70	26	29	160	39	0,47
65/40	66	70	37	40	160	39	0,46
65/40	66	70	38	41	160	39	0,46
65/50	66	70	49	52	160	39	0,46
65/50	66	70	50	53	160	39	0,46
80/25	81	85	25	28	180	46,5	0,70
80/25	81	85	26	29	180	46,5	0,70
80/40	81	85	37	40	180	46,5	0,70
80/40	81	85	38	41	180	46,5	0,70
80/50	81	85	49	52	180	46,5	0,68
80/50	81	85	50	53	180	46,5	0,68
80/65	81	85	66	70	180	46,5	0,68
100/25	100	104	25	28	200	56	1,00
100/25	100	104	26	29	200	56	1,00
100/40	100	104	37	40	200	56	1,00
100/40	100	104	38	41	200	56	1,00
100/50	100	104	49	52	200	56	1,00
100/50	100	104	50	53	200	56	1,00
100/65	100	104	66	70	200	56	0,97
100/80	100	104	81	85	200	56	0,97
125/25	125	129	25	28	374	68,5	2,00
125/25	125	129	26	29	374	68,5	2,00
125/40	125	129	37	40	374	68,5	2,00
125/40	125	129	38	41	374	68,5	2,00
125/50	125	129	49	52	374	68,5	2,00
125/50	125	129	50	53	374	68,5	2,00
125/65	125	129	66	70	374	68,5	1,97
125/80	125	129	81	85	374	68,5	1,97
125/100	125	129	100	104	374	68,5	1,97
150/25	150	154	25	28	450	81	2,95
150/25	150	154	26	29	450	81	2,95
150/40	150	154	37	40	450	81	2,95
150/40	150	154	38	41	450	81	2,95
150/50	150	154	49	52	450	81	2,95
150/50	150	154	50	53	450	81	2,95
150/65	150	154	66	70	450	81	2,89
150/80	150	154	81	85	450	81	2,89
150/100	150	154	100	104	450	81	2,89
150/125	150	154	125	129	450	81	2,89

112007_1.000

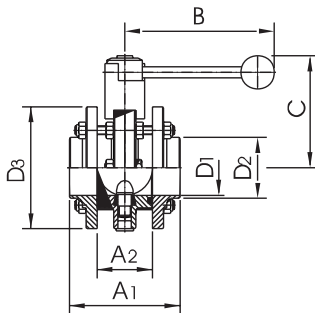
Disc valves measures and weights

Disc valve DIN-SS



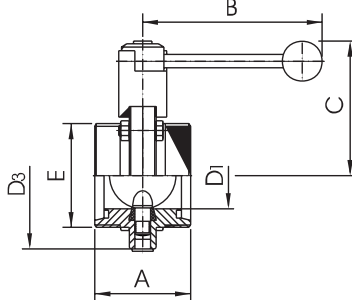
DN	A	B	C	D1	D2	D3	W [kg]
25	40	107	90	26	31	87	1,3
32	42	107	92	32	37	92	1,4
40	50	137	94	38	43	97	1,5
50	50	137	101	50	55	110	1,8
65	50	137	110	66	72	127	2,2
80	60	167	123	81	87	142	4,0
100	64	167	134	100	106	162	4,8
125	112	248	168	125	132	200	8,1
150	124	248	183	150	157	230	10,3

Disc valve DIN-ZFA



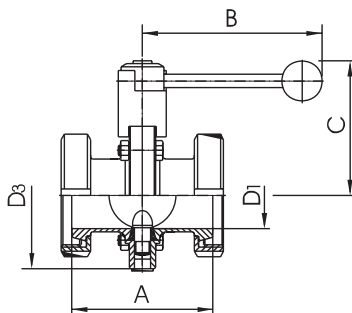
DN	A1	A2	B	C	D1	D2	D3	W [kg]
25	90	50	107	90	26	31	87	2,4
32	90	50	107	92	32	37	92	2,6
40	100	50	137	94	38	43	97	2,8
50	100	50	137	101	50	55	110	3,4
65	100	50	137	110	66	72	127	4,1
80	136	76	167	123	81	87	142	7,4
100	136	76	167	134	100	106	162	8,8
125	168	88	248	168	125	132	200	15,1
150	178	88	248	183	150	157	230	18,4
200	112	56	276	200	200	208	274	26,2

Disc valve DIN-GG



DN	A	B	C	D1	D3	E	W [kg]
25	64	107	90	26,0	87	52 x 1/6"	1,7
32	64	107	92	32,0	92	58 x 1/6"	1,8
40	72	137	94	38,0	97	65 x 1/6"	2,0
50	72	137	101	50,0	110	78 x 1/6"	2,4
65	76	137	110	66,0	127	95 x 1/6"	3,1
75/3"	90	167	123	72,1	142	104 x 1/6"	5,0
80	100	167	123	81,0	142	110 x 1/4"	5,2
100	104	167	134	100,0	162	130 x 1/4"	6,5
125	112	248	168	125,0	200	160 x 1/4"	10,2
150	124	248	183	150,0	230	190 x 1/4"	13,9

Disc valve DIN-KK



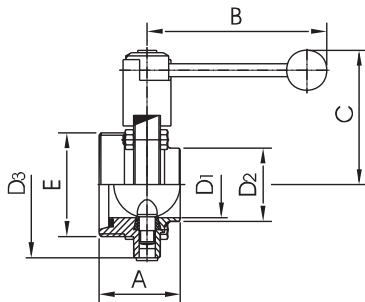
DN	A	B	C	D1	D3	W [kg]
25	84	107	90	26,0	87	2,0
32	92	107	92	32,0	92	2,2
40	102	137	94	38,0	97	2,6
50	106	137	101	50,0	110	3,5
65	114	137	110	66,0	127	4,3
75/3"	124	167	123	72,1	142	6,4
80	134	167	123	81,0	142	7,3
100	152	167	134	100,0	162	9,9
125	180	248	168	125,0	200	11,8
150	198	248	183	150,0	230	15,2

11.2007_1.000

www.rofi.de

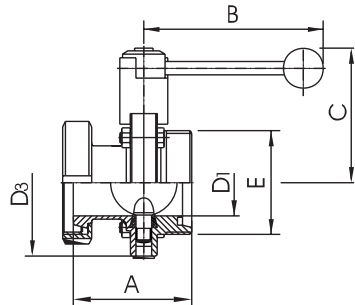
Disc valves measures and weights

Disc valve DIN-GS



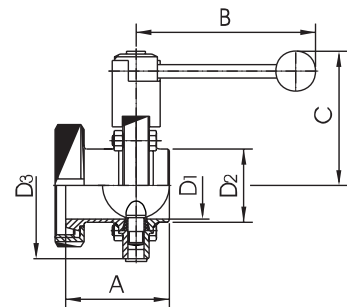
DN	A	B	C	D1	D2	D3	E	W [kg]
25	52	107	90	26	31	87	52 x 1/6"	1,5
32	53	107	92	32	37	92	58 x 1/6"	1,6
40	61	137	94	38	43	97	65 x 1/6"	1,8
50	61	137	101	50	55	110	78 x 1/6"	2,1
65	63	137	110	66	72	127	95 x 1/6"	2,6
80	80	167	123	81	87	142	110 x 1/4"	4,6
100	84	167	134	100	106	162	130 x 1/4"	5,6
125	112	248	168	125	132	200	160 x 1/4"	9,2
150	124	248	183	150	157	230	190 x 1/4"	12,2

Disc valve DIN-GK



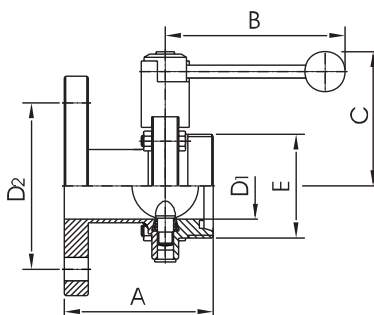
DN	A	B	C	D1	D3	E	W [kg]
25	74	107	90	26,0	87	52 x 1/6"	1,8
32	78	107	92	32,0	92	58 x 1/6"	1,9
40	87	137	94	38,0	97	65 x 1/6"	2,2
50	89	137	101	50,0	110	78 x 1/6"	2,7
65	95	137	110	66,0	127	95 x 1/6"	3,4
75/3"	107	167	123	72,1	142	104 x 1/6"	5,5
80	117	167	123	81,0	142	110 x 1/4"	5,6
100	128	167	134	100,0	162	130 x 1/4"	7,1
125	146	248	168	125,0	200	160 x 1/4"	11,4
150	161	248	183	150,0	230	190 x 1/4"	15,6

Disc valve DIN-KS



DN	A	B	C	D1	D2	D3	W [kg]
25	62	107	90	26,0	31,0	87	1,6
32	67	107	92	32,0	37,0	92	1,8
40	76	137	94	38,0	43,0	97	2,1
50	78	137	101	50,0	55,0	110	2,7
65	82	137	110	66,0	72,0	127	3,2
75/3"	92	167	123	72,1	77,5	142	5,3
80	97	167	123	81,0	87,0	142	5,6
100	08	167	134	100,0	106,0	162	7,4
125	146	248	168	125,0	132,0	200	10,7
150	161	248	183	150,0	157,0	230	13,3

Disc valve DIN-GF-ND10

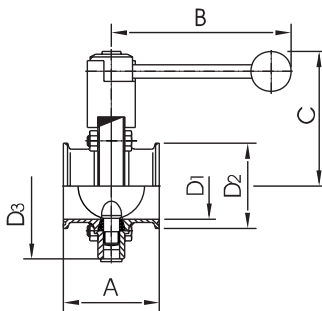


DN	A	B	C	D1	D2	E	W [kg]
25	106	107	90	26	85	52 x 1/6"	2,6
32	106	107	92	32	100	58 x 1/6"	3,2
40	110	137	94	38	110	65 x 1/6"	3,6
50	112	137	101	50	125	78 x 1/6"	4,6
65	122	137	110	66	145	95 x 1/6"	5,6
80	135	167	123	81	160	110 x 1/4"	8,0
100	140	167	134	100	180	130 x 1/4"	9,6
125	167	216	168	125	210	160 x 1/4"	15,5
150	182	216	183	150	240	190 x 1/4"	20,0

112007_1.000

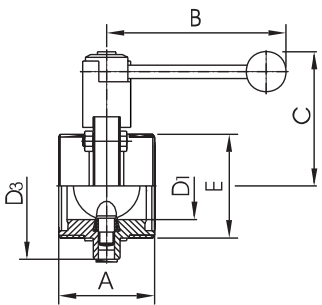
Disc valves measures and weights

Disc valve DIN-CC



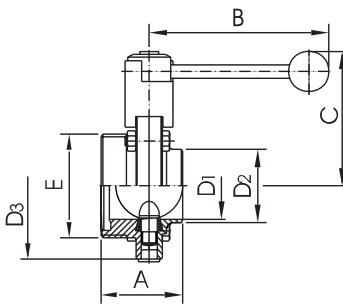
DN	A	B	C	D1	D2	D3	W [kg]
25	64	107	90	26	50,5	87	1,5
32	72	107	92	32	50,5	92	1,5
40	72	137	94	38	50,5	97	1,6
50	72	137	101	50	64,0	110	1,9
65	76	137	110	66	91,0	127	2,4
80	100	167	123	81	106,0	142	4,4
100	104	167	134	100	119,0	162	5,2

DIN-GG Asep.-Con. DIN-11864/1



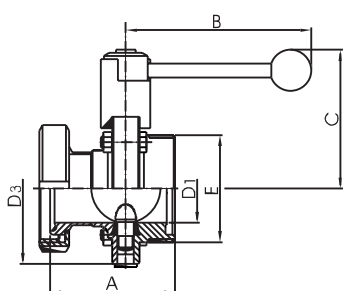
DN	A	B	C	D1	D3	E	W [kg]
25	64	107	90	26	87	52 x 1/6"	1,7
32	64	107	92	32	92	58 x 1/6"	1,8
40	72	137	94	38	97	65 x 1/6"	2,0
50	72	137	101	50	110	78 x 1/6"	2,4
65	76	137	110	66	127	95 x 1/6"	3,1
80	100	167	123	81	142	110 x 1/4"	5,2
100	104	167	134	100	162	130 x 1/4"	6,5

DIN-GS Asep.-Con. DIN-11864/1



DN	A	B	C	D1	D2	D3	E	W [kg]
25	52	107	90	26	31	87	52 x 1/6"	1,5
32	53	107	92	32	37	92	58 x 1/6"	1,6
40	61	137	94	38	43	97	65 x 1/6"	1,8
50	61	137	101	50	55	110	78 x 1/6"	2,1
65	63	137	110	66	72	127	95 x 1/6"	2,6
80	80	167	123	81	87	142	110 x 1/4"	4,6
100	84	167	134	100	106	162	130 x 1/4"	5,6

DIN-GB Asep.-Con. DIN-11864/1



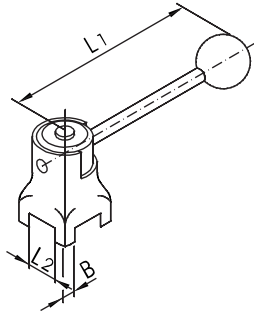
DN	A	B	C	D1	D3	E	W [kg]
25	74	107	90	26	87	52 x 1/6"	1,8
32	78	107	92	32	92	58 x 1/6"	1,9
40	87	137	94	38	97	65 x 1/6"	2,2
50	89	137	101	50	110	78 x 1/6"	2,7
65	95	137	110	66	127	95 x 1/6"	3,4
80	117	167	123	81	142	110 x 1/4"	5,6
100	128	167	134	100	162	130 x 1/4"	7,1

11.2007_1.000

www.rofi.de

Handles and Accessories

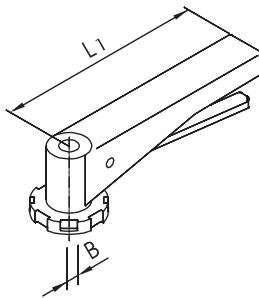
SV-Handle-standard ball



DN	B	L1	L2	W [kg]
25 - 32	9,5	107	20	0,40
40 - 65	9,5	137	20	0,41
75/3" - 100	9,5	167	32	0,85
125 - 150	14,0	248	32	1,83
200	14,0	276	32	1,91

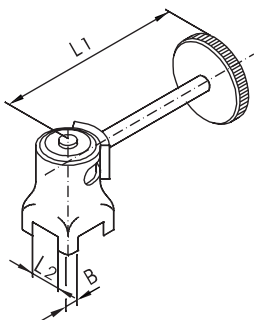
non-threaded holes M4

SV-Scissors handle



DN	L1	B	W [kg]
25 - 65	145	9,5	0,29
75/3" - 100	145	9,5	0,29

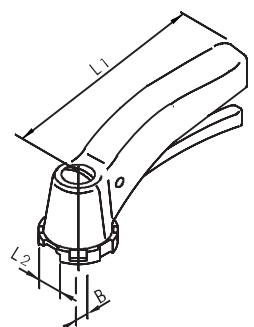
SV-Handle variable



DN	B	L1	L2	W [kg]
25 - 65	9,5	126	20	0,59
75/3" - 100	9,5	145	32	0,97
125 - 200	14,0	233	32	2,17

non-threaded holes M4

SV-Plastic handle

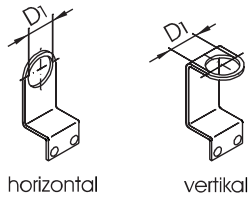


DN	L1	L2	B	W [kg]
25 - 40	105	20	9,5	0,15
50 - 65	166	20	9,5	0,18
80 - 100	166	32	9,5	0,17

112007_1.000

Handles and Accessories

SV-ZB-Bracket-hand-prox.-INI

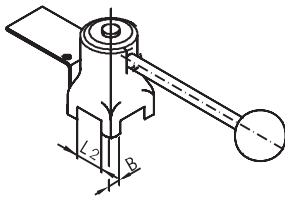


horizontal

vertikal

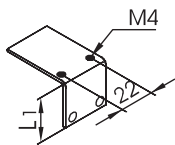
DN	D1	DN	D1
horizontal		vertical	
25 - 200	18,3	25 - 200	18,3
25 - 200	12,3	25 - 200	12,3

SV-Handle for mech. limit switch



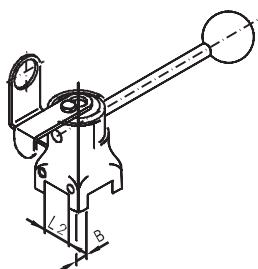
DN	B	L2	W [kg]
25 - 32	9,5	20	0,62
40 - 65	9,5	20	0,63
75/3" - 100"	9,5	32	1,06
125 - 150	14	32	2,04
200	14	32	2,12

SV-ZB-Bracket-hand limit switch



DN	L1
25 - 65	15
75/3" - 100	20
125 - 200	25

SV-Handle for Proximity-INI (NI)



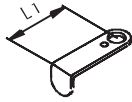
DN	B	L2	W [kg]
horizontal			
25 - 32	9,5	20,0	0,8
40 - 65	9,5	20,0	0,9
75 / 3" - 100	9,5	32,0	1,3
125 - 150	14,0	32,0	2,3
200	14,0	32,0	2,4
vertical			
25 - 32	9,5	20,0	0,8
40 - 65	9,5	20,0	0,9
75 / 3" - 100	9,5	32,0	1,3
125 - 150	14,0	32,0	2,3
200	14,0	32,0	2,4

11.2007_1.000

www.rofi.de

Accessories

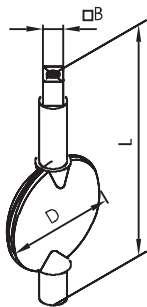
SV-Contact sheet Hand-INI



mit 1x M4- Schrauben

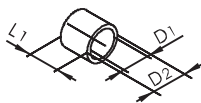
DN	L1
25 - 65	35
80 - 100	45
125 - 200	55

SV-Flap



DN	D	L	B	W [kg]
25	26	80	9.5	0,05
32	32	87.5	9.5	0,06
40	38	93.5	9.5	0,10
50	50	111	9.5	0,15
2 1/2"	60.1	129.5	9.5	0,23
65	66	128	9.5	0,24
75 / 3"	71.1	144	9.5	0,30
80	81	144	9.5	0,39
100	100	164	9.5	0,63
125	125	207	14	1,16
150	150.8	236.5	14	2,00
200	200	320	14	4,25

SV-ZB female

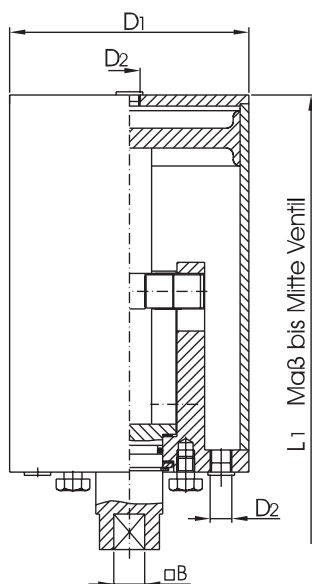


DN	D1	D2	L1
25	10	12	5
32	10	12	5
40	12	14	10
50	12	14	10
2 1/2"	12	14	10
65	12	14	10
75 / 3"	14	16	12
80	14	16	12
100	14	16	12
125	18	20	18
150	18	20	18
200	22	26	30

112007_1.000

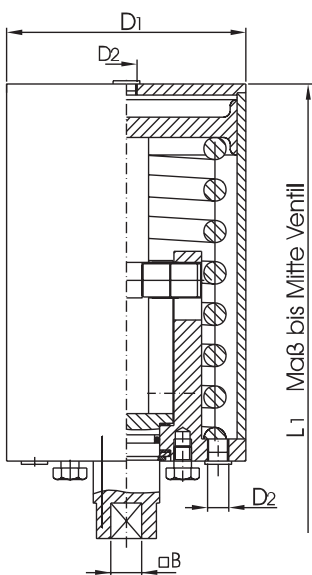
SV-Drive

SV-Drive-pneum. L/L



DN	D1	D2	L1	B	W [kg]
25	89	R 1 / 8"	236	9,5	2,5
32	89	R 1 / 8"	238	9,5	2,5
40	89	R 1 / 8"	241	9,5	2,5
50	89	R 1 / 8"	247	9,5	2,5
65	89	R 1 / 8"	256	9,5	2,5
75 / 3"	89	R 1 / 8"	263	9,5	2,5
80	89	R 1 / 8"	263	9,5	2,5
100	89	R 1 / 8"	273	9,5	2,5
125	129	R 1 / 8"	332	14	7,2
150	129	R 1 / 8"	347	14	7,2
200	129	R 1 / 8"	385	14	7,2

SV-Drive-pneum. L/F



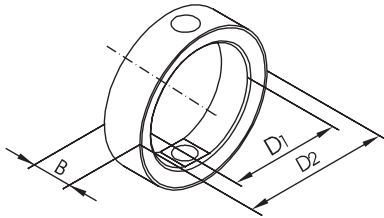
DN	D1	D2	B	L1	W [kg]
25	85	R 1 / 8"	9,5	226	3,1
32	85	R 1 / 8"	9,5	228	3,1
40	85	R 1 / 8"	9,5	231	3,1
50	85	R 1 / 8"	9,5	237	3,1
65	85	R 1 / 8"	9,5	246	3,1
75 / 3"	85	R 1 / 8"	9,5	253	3,1
80	85	R 1 / 8"	9,5	253	3,1
100	85	R 1 / 8"	9,5	263	3,1
125	129	R 1 / 8"	14	332	9,3
150	129	R 1 / 8"	14	347	9,3
200	129	R 1 / 8"	14	385	9,3
reinforced construction					
25	104	R 1 / 8"	9,5	270	5,1
32	104	R 1 / 8"	9,5	272	5,1
40	104	R 1 / 8"	9,5	275	5,1
50	104	R 1 / 8"	9,5	281	5,1
65	104	R 1 / 8"	9,5	290	5,1
75 / 3"	104	R 1 / 8"	9,5	297	5,1
80	104	R 1 / 8"	9,5	297	5,1
100	104	R 1 / 8"	9,5	307	5,1

11.2007_1.000

www.rofi.de

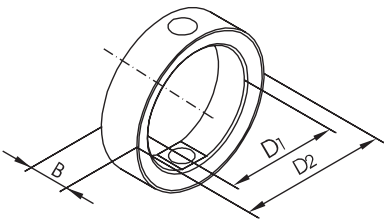
Gaskets

SV-Gasket-VMQ (Silicon)



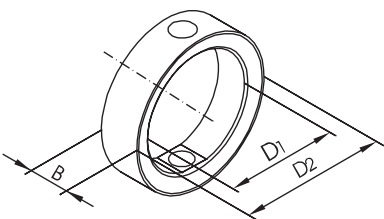
DN	D1	D2	B	W [kg]
25	26	40	20	0,02
32	32	48	20	0,03
40	38	54	21	0,05
50	51	67	21	0,04
2 1/2"	60,5	80	22	0,07
65	67	85	22	0,07
75 / 3"	74	93	24	0,09
80	82	101	24	0,10
100	101	116	26	0,10
125	125	151	29	0,25
150	150	175	29	0,27
200	203	230	37	0,42

SV-Gasket-FPM (Viton)



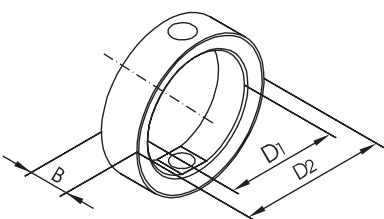
DN	D1	D2	B	W [kg]
25	26	40	20	0,03
32	32	48	20	0,03
40	38	54	21	0,04
50	51	67	21	0,05
2 1/2"	60,5	80	22	0,10
65	67	85	22	0,10
75 / 3"	74	93	24	0,11
80	82	101	24	0,12
100	101	116	26	0,14
125	125	151	29	0,30
150	150	175	29	0,32
200	203	230	37	0,64

SV-Gasket-EPDM



DN	D1	D2	B	W [kg]
25	26	40	20	0,02
32	32	48	20	0,02
40	38	54	21	0,02
50	51	67	21	0,03
2 1/2"	60,5	80	22	0,05
65	67	85	22	0,05
75 / 3"	74	93	24	0,06
80	82	101	24	0,08
100	101	116	26	0,09
125	125	151	29	0,17
150	150	175	29	0,20
200	203	230	37	0,40

SV-Gasket-NBR (Perbunan)

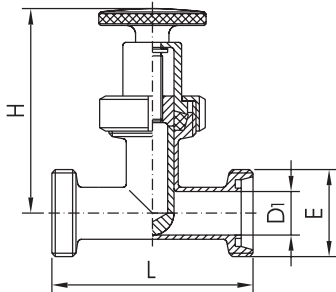


DN	D1	D2	B	W [kg]
25	26	40	20	0,02
32	32	48	20	0,02
40	38	54	21	0,03
50	51	67	21	0,03
2 1/2"	60,5	80	22	0,05
65	67	85	22	0,05
75 / 3"	74	93	24	0,06
80	82	101	24	0,07
100	101	116	26	0,09
125	125	151	29	0,21
150	150	175	29	0,24
200	203	230	37	0,45

112007_1.000

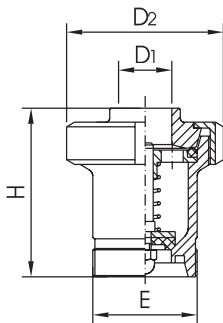
Valves and water level indicator

Throttle valve



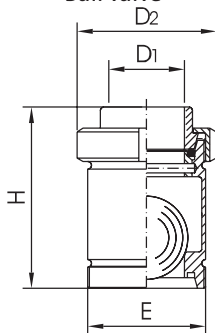
DN	D1	L	H	E	W [kg]
25	26	128	120	52 x 1/6"	1,03
32	31	128	135	58 x 1/6"	1,39
40	38	138	145	65 x 1/6"	2,05
50	50	154	150	78 x 1/6"	3,11
65	66	168	225	95 x 1/6"	4,52
80	81	230	310	110 x 1/4"	5,11

Disc check valve



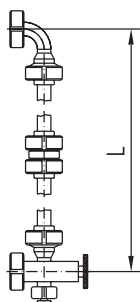
DN	D1	D2	H	E	W [kg]
25	26	63	94	52 x 1/6"	1,08
32	32	70	95	58 x 1/6"	1,20
40	38	78	101	65 x 1/6"	2,20
50	50	92	110	78 x 1/6"	2,55
65	64	112	151	95 x 1/6"	3,70
80	81	127	162	110 x 1/4"	5,90
100	100	148	200	130 x 1/4"	9,80

Ball valve



DN	D1	D2	H	E	W [kg]
10	10	38	64	28 x 1/8"	0,25
15	16	44	74	34 x 1/8"	0,30
20	20	54	83	44 x 1/6"	0,40
25	26	63	95	52 x 1/6"	0,58
32	31	70	101	58 x 1/6"	0,62
40	38	78	108	65 x 1/6"	0,84
50	50	92	120	78 x 1/6"	1,78
65	66	112	175	95 x 1/6"	2,70
80	81	127	207	110 x 1/4"	4,13
100	100	148	220	130 x 1/4"	6,15

Tank level indicator



L

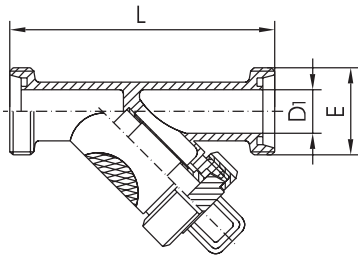
indicate with order

11.2007_1.000

www.rofi.de

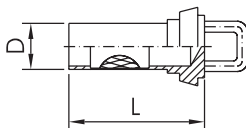
Strainers, strainers and replace screens

Strainers



DN	D1	L	E	W [kg]
20	20	128	44 x 1/6"	3,60
25	26	158	52 x 1/6"	3,70
32	32	170	58 x 1/6"	4,35
40	38	186	65 x 1/6"	5,20
50	50	232	78 x 1/6"	7,00
65	66	235	95 x 1/4"	11,90
80	81	290	110 x 1/4"	14,10
100	100	340	130 x 1/4"	18,20

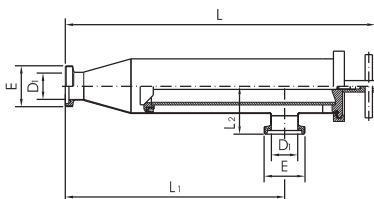
Filter cartridge for strainers



DN	D	L	W [kg]
20	20	73	0,10
25	25,8	76	0,20
32	31,8	84	0,30
40	37,8	92	0,40
50	47,8	105	0,50
65	65,8	132	0,80
80	80,8	161	1,40
100	99,8	195	1,90

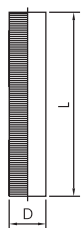
for all mesh sizes: 1 mm

Strainers DIN-GG



DN	D1	E	L	L1	L2	W [kg]
25	26	Rd 52x1/6"	561	413	67	3,9
32	32	Rd 58x1/6"	552	404	70	4,0
40	38	Rd 65x1/6"	543	395	70	4,2
50	50	Rd 78x1/6"	589	417	90	7,4
65	66	Rd 95x1/6"	565	393	95	7,8
80	81	Rd 110x1/4"	777	573	125	13,2
100	100	Rd 130x1/4"	750	546	134	13,9
125	125	Rd 160x1/4"	889	560	157	28,3
150	150	Rd 190x1/4"	993	620	165	33,1

Canned



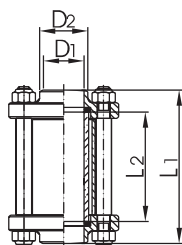
DN	D	L	gap width	fee screening area [cm²]	W[kg]
25-40	45	353	0,5	161	0,5
50-65	70	350	0,5	248	0,77
80-100	110	470	0,5	527	1,26
125	137	750	0,5	807	6,1
150	164	850	0,5	1291	8,3
25-40	45	353	1	241	0,5
50-65	70	350	1	372	0,77
80-100	110	470	1	791	1,26
125	137	750	1	1095	6,1
150	164	850	1	1784	8,3

Other clearances from on request up to 0,05 mm

112007_1.000

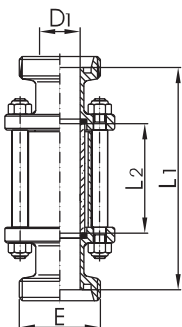
Look lantern

Look lantern DIN-SS



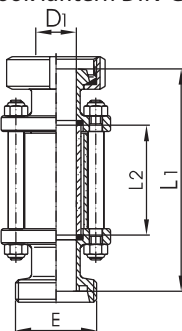
DN	D1	D2	L1	L2	W [kg]
10	10	15	88	60	0,25
15	16	21	88	60	0,30
20	20	25	88	60	0,73
25	26	31	98	70	0,75
32	32	37	104	70	0,76
40	38	43	112	70	1,08
50	50	55	112	70	1,34
65	66	72	127	85	1,90
80	81	87	135	85	2,35
100	100	106	169	115	2,80
125	125	132	202	160	6,35
150	150	157	216	170	7,11

Look lantern DIN-GG



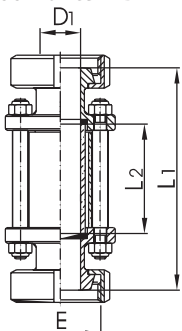
DN	D1	L1	L2	E	W [kg]
10	10	122	60	Rd 28 x 1/8"	0,32
15	16	122	60	Rd 34 x 1/8"	0,39
20	20	124	60	Rd 44 x 1/6"	0,90
25	26	142	70	Rd 52 x 1/6"	1,00
32	32	154	70	Rd 58 x 1/6"	1,08
40	38	164	70	Rd 65 x 1/6"	1,50
50	50	168	70	Rd 78 x 1/6"	1,94
65	66	191	85	Rd 95 x 1/6"	2,80
80	81	209	85	Rd 110 x 1/4"	3,10
100	100	257	115	Rd 130 x 1/4"	4,36
125	125	270	160	Rd 160 x 1/4"	8,80
150	150	290	170	Rd 190 x 1/4"	10,50

Look lantern DIN-GK



DN	D1	L1	L2	E	W [kg]
10	10	122	60	Rd 28 x 1/8"	0,38
15	16	122	60	Rd 34 x 1/8"	0,45
20	20	124	60	Rd 44 x 1/6"	0,69
25	26	142	70	Rd 52 x 1/6"	1,02
32	32	154	70	Rd 58 x 1/6"	1,25
40	38	164	70	Rd 65 x 1/6"	1,67
50	50	168	70	Rd 78 x 1/6"	2,17
65	66	191	85	Rd 95 x 1/6"	3,26
80	81	209	85	Rd 110 x 1/4"	3,71
100	100	257	115	Rd 130 x 1/4"	5,10
125	125	270	160	Rd 160 x 1/4"	9,50
150	150	290	170	Rd 190 x 1/4"	11,30

Look lantern DIN-KK



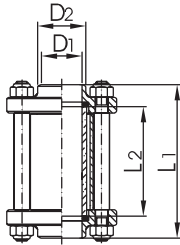
DN	D1	L1	L2	E	W [kg]
10	10	122	60	Rd 28 x 1/8"	0,44
15	16	122	60	Rd 34 x 1/8"	0,52
20	20	124	60	Rd 44 x 1/6"	1,08
25	26	142	70	Rd 52 x 1/6"	1,20
32	32	154	70	Rd 58 x 1/6"	1,41
40	38	165	70	Rd 65 x 1/6"	1,89
50	50	168	70	Rd 78 x 1/6"	2,50
65	66	191	85	Rd 95 x 1/6"	3,64
80	81	209	85	Rd 110 x 1/4"	4,27
100	100	257	115	Rd 130 x 1/4"	6,13
125	125	270	160	Rd 160 x 1/4"	10,20
150	150	290	170	Rd 190 x 1/4"	11,79

11.2007_1.000

www.rofi.de

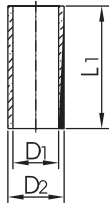
Look lantern and Spares

Look lantern Zoll-SS



DN	D1	D2	L1	L2	W [kg]
1"	22,9	28	96	70	0,72
1 1/4"	29,3	35	102	70	0,78
1 1/2"	35,1	41	110	70	1,12
2"	47,8	54	110	70	1,38
2 1/2"	60,5	68	124	85	1,90
3"	72,1	78	132	85	2,35
4"	97,6	104	167	115	2,80

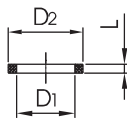
Gas cylinders for look lantern



DN	D1	D2	L1	W [kg]
10	10	15	60	0,02
15	17	22	60	0,02
20	20	26	60	0,03
25 + 1"	26	32	70	0,04
32 + 1 1/4"	34	40	70	0,06
40 + 1 1/2"	40	50	70	0,11
50 + 2"	50	60	70	0,14
2 1/2"	60	70	85	0,18
65	65	75	85	0,21
3"	75	85	90	0,27
80	80	90	85	0,30
100 + 4"	100	110	115	0,43
125	126	140	160	1,12
150	152	170	170	1,80

112007_1.000

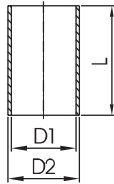
Sealing ring for look lantern



DN	D1	D2	L1
10	10	16	3
15	16	23	3
20	20	27	3
25 + 1"	26	33	3
32 + 1 1/4"	32	39	3
40 + 1 1/2"	38	51	3
50 + 2"	50	61	3
2 1/2"	61	72	3
65	66	76	3
3"	76	87	4
80	81	91	4
100 + 4"	100	111	4
125	125	141	4
150	150	171	4

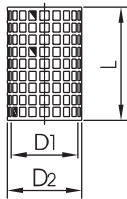
Accessories for look lantern

Shatterproof polycarbonate



DN	D1	D2	L	W [kg]
10	20	24	50	0,01
15	27	30	50	0,01
20	35	38	50	0,01
25 + 1"	36	40	61	0,01
32 + 1 1/4"	42	45	61	0,02
40 + 1 1/2"	54	60	61	0,02
50 + 2"	66	70	61	0,03
65 + 2 1/2"	80	88	75	0,04
80 + 3"	95	100	77	0,04
100 + 4"	128	133	103	0,07
125	164	170	144	0,12
150	194	200	158	0,17

Shatterproof (perforated sheet metal)



DN	D1	D2	L	W [kg]
10	19	21	46	0,01
15	25	27	46	0,01
20	29	31	46	0,01
25 + 1"	34	36	60	0,01
32 + 1 1/4"	41	43	60	0,02
40 + 1 1/2"	52	54	60	0,02
50 + 2"	63	65	60	0,03
65 + 2 1/2"	78	80	74	0,04
80 + 3"	94	96	74	0,04
100 + 4"	113	115	102	0,07
125	143	145	144	0,12
150	173	175	158	0,17

Technical Informations

Polycarbonate (shatterproof for viewport)

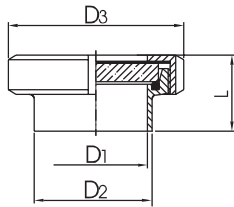
Color:	transparent (Light Transmission > 86%)
Material-description:	Thermoplastic polymer
Operating temperature:	short term up to about 120 ° C for cleaning
Typically use:	<ul style="list-style-type: none"> - protection for splinter Sightglasses - very Breakproof and Impact - excellent light transmission - resistant to mineral acids, many org. Acids oxidizing and reducing agents, neutral and acidic saline solutions, many fats, waxes and oils
Operating limits:	<ul style="list-style-type: none"> - not very scratch resistant - not resistant to aqueous or alcoholic alkali lye, Ammonia and its solutions and amines. - severe swelling in benzene, chlorobenzene, tetralin, acetone, ethyl acetate, Acetonitrile and carbon tetrachloride - not designed for product contact parts

Recommended cleaning:

- Fa. WIGOL: 30 20 04, 30 20 00, 1085, 60 80 25
- Fa. WEBCO: „alcip“

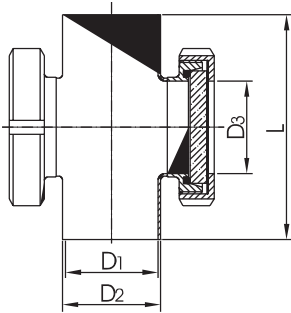
Sight glass fittings for tube dimension to DIN 11850 + Accessories

Sight glass with borosilicate glass



DN	D1	D2	D3	L	W [kg]
25	26	29	63	37	0,31
32	32	35	70	40	0,40
40	38	41	78	41	0,48
50	50	53	92	43	0,69
65	66	70	112	48	1,10
80	81	85	127	54	1,61
100	100	104	148	64	2,27
125	125	129	178	58	3,08
150	150	154	210	60	5,28

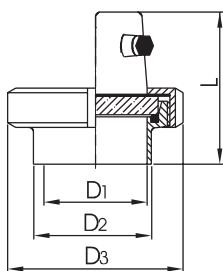
Sight glass fitting-DIN-SS



DN	D1	D2	D3	L1	W [kg]
25	25	28	26	100	0,85
	26	29	26	100	0,85
32	31	34	32	110	0,90
	32	35	32	110	0,90
40	37	40	28	120	1,10
	38	41	38	120	1,10
50	49	52	50	140	1,50
	50	53	50	140	1,50
65	66	70	66	160	1,80
80/65	81	85	66	180	2,80
100/65	100	104	66	200	3,00
125/100	125	129	100	375	6,20
150/100	150	154	100	450	6,50

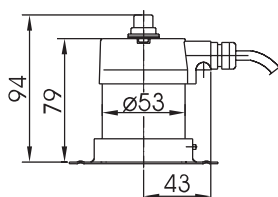
112007_1.000

Sight glass DIN weld w. beacon



DN	D1	D2	D3	L	W [kg]
65	66	70	112	110	1,40
80	81	85	127	135	2,10
100	100	104	148	153	2,70
125	125	129	178	150	3,60

Lights for sight glass DIN-SS

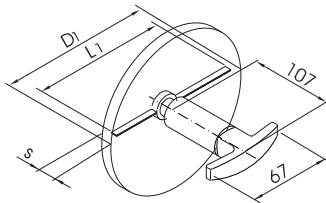


DN

65-125

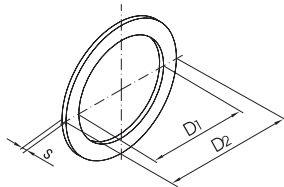
Sight glass fittings for tube dimension to DIN 11850 + Accessories

Windscreen glass disc



DN	D1	S	L1	W [kg]
65	80	12	63	0,20
80	100	15	77	0,48
100	113	15	97	0,53

Seal for sight glass



DN	D1	D2	S	W [kg]
25	26	52	1	0,00
32	32	58	1	0,01
40	38	65	1	0,01
50	50	78	1	0,01
65	66	95	1	0,01
80	81	110	1	0,01
100	100	130	1	0,02
125	125	160	1	0,04
150	150	190	1	0,05

Look borosilicate glass



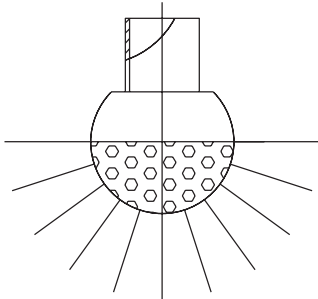
DN	D	S	W [kg]
25	45	10	0,03
32	50	10	0,04
40	55	10	0,06
50	63	10	0,08
65	80	12	0,14
80	100	15	0,29
100	117	15	0,33
125	150	20	0,66
150	175	20	1,18

11.2007_1.000

www.rofi.de

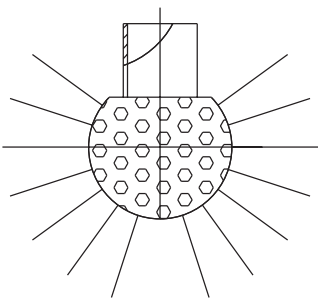
Actuators

Spray head, perforation 180° downwards



DN	Type	Ball Ø	Flow-rate m³/h	Injection-pressure	Injection-circuit Øm	H
				1 bar		
20	A2 - 3	40	5,9	10 - 25 mWS head	2,0-2,5	50
25	B3 - 3	64	6,5		2,0-3,0	90
25/1	B5 - 3	64	13,4		3,0-4,0	90
32	F4 - 3	64	7,3		2,5-3,5	90
32/1	F5 - 3	64	13,4		3,0-4,0	90
40	C4 - 3	64	7,2		2,5-3,5	90
40/1	C5 - 3	64	13,4		3,0-4,0	90
50	D4 - 3	90	16,3		4,0-4,5	120
50/1	D5 - 3	90	30,3		6,0	120

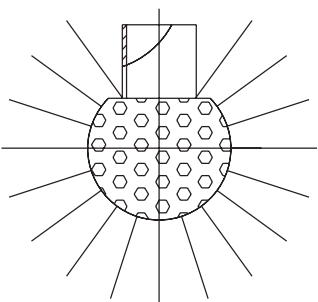
Spray head, perforation 270° upwards



DN	Type	Ball Ø	Flow-rate m³/h	Injection-pressure	Injection-circuit Øm	H
				1 bar		
20	A2 - 4	40	7,8	10 - 25 mWS head	2,0-2,5	50
25	B3 - 4	64	10,6		2,0-3,0	90
25/1	B5 - 4	64	21,7		3,0-4,0	90
32	F4 - 4	64	11,7		2,5-3,5	90
32/1	F5 - 4	64	21,7		3,0-4,0	90
40	C4 - 4	64	10,2		2,5-3,5	90
40/1	C5 - 4	64	19		3,0-4,0	90
50	D4 - 4	90	26,8		4,0-4,5	120
50/1	D5 - 4	90	47		6,0	120

112007_1.000

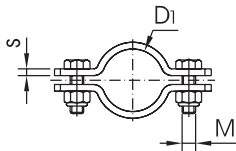
Spray head, perforation 360°



DN	Type	Ball Ø	Flow-rate m³/h	Injection-pressure	Injection-circuit Øm	H
				1 bar		
20	A2 - 1	40	7,8	10 - 25 mWS head	2,0-2,5	50
25	B3 - 1	64	10,6		2,0-3,0	90
25/1	B5 - 1	64	21,7		3,0-4,0	90
32	F4 - 1	64	11,7		2,5-3,5	90
32/1	F5 - 1	64	21,7		3,0-4,0	90
40	C4 - 1	64	10,2		2,5-3,5	90
40/1	C5 - 1	64	19		3,0-4,0	90
50	D4 - 1	90	26,8		4,0-4,5	120
50/1	D5 - 1	90	47		6,0	120

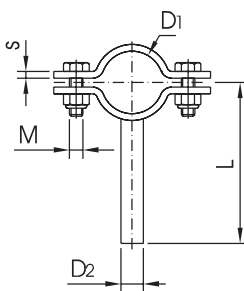
Mounting accessories

Pipe clamp without shaft



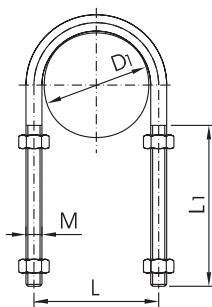
DN	D1	M	S	W [kg]
10	12	M 6	3	0,02
15	18	M 6	3	0,04
20	22	M 6	3	0,05
25	28	M 6	3	0,05
32	34	M 6	3	0,07
40	40	M 6	3	0,07
50	52	M 6	3	0,08
65	70	M 6	3	0,09
80	85	M 6	3	0,15
100	104	M 6	3	0,23
125	129	M 8	3	0,41
150	154	M 8	3	0,96
200	204	M 8	4	1,80
250	254	M 10	4	3,60

Pipe clamp with shaft



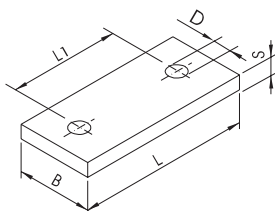
DN	D1	D2	L	M	S	W [kg]
10	12	8	64	M 6	3	0,04
15	18	8	67	M 6	3	0,07
20	22	8	69	M 6	3	0,08
25	28	8	72	M 6	3	0,10
32	34	8	75	M 6	3	0,11
40	40	10	78	M 6	3	0,12
50	52	10	84	M 6	3	0,13
65	70	12	93	M 6	3	0,16
80	85	12	100,5	M 6	3	0,27
100	104	14	110	M 6	3	0,32
125	129	16	140	M 8	3	0,48
150	154	16	180	M 8	3	1,04
200	204	20	240	M 8	4	1,90
250	254	22	250	M 10	4	3,70

Pipe clamp



DN	D1	L	L1	M	W [kg]
10	12	20	80	M 6	0,05
15	18	26	80	M 6	0,05
20	22	30	80	M 6	0,05
25	28	38	80	M 8	0,05
32	34	44	80	M 8	0,05
40	40	50	80	M 8	0,10
50	52	62	80	M 8	0,11
65	70	80	80	M 8	0,12
80	85	97	80	M 10	0,22
100	104	116	80	M 10	0,25
125	129	143	90	M 12	0,28
150	154	168	90	M 12	0,46
200	204	218	90	M 12	0,57

Holding flange



DN	D	L	L1	S	W [kg]
60	11,5	130	100	8	0,5

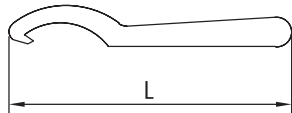
11.2007_1.000

www.rofi.de

Hook wrench and hose holder

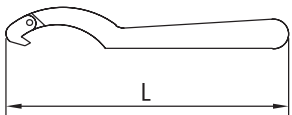
Stainless hook wrench

DN	L	W [kg]
10-20	260	0,40
25-50	370	0,45
65-100	440	0,55

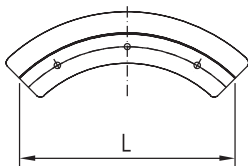


Hook wrench with stainless joint

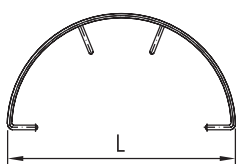
DN	L	W [kg]
10-20	175	0,09
25-50	290	0,24
65-100	290	0,44



Hose holder profiles



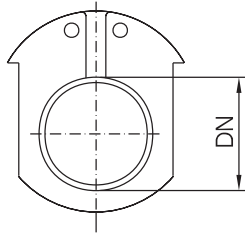
Hose holders of round material



112007_1.000

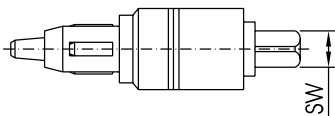
Tools

Roller device



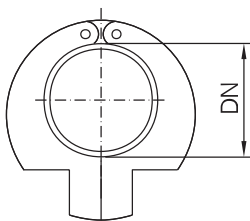
DN	W [kg]
10	1,30
15	1,35
20	1,40
25	1,50
32	1,50
40	1,60
50	2,00
65	2,50
80	2,80
100	3,70

Tube roller for DIN tube



DN	SW	W [kg]
10	8	0,35
15	8	0,37
20	8	0,38
25	12	0,70
32	12	1,05
40	14	1,54
50	14	2,37
65	16	4,15
80	22	7,90
100	22	10,50

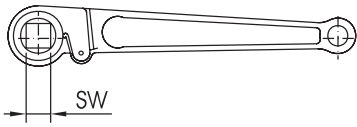
Pipe saw tools for DIN tube



DN	D	W [kg]
10	12	0,61
15	13	0,61
15	18	0,62
15	19	0,62
20	22	0,63
20	23	0,63
25	28	0,65
25	29	0,65
32	34	0,67
32	35	0,67
40	40	0,87
40	41	0,87
50	52	1,00
50	53	1,00
65	70	1,96
80	85	2,43
100	104	2,44

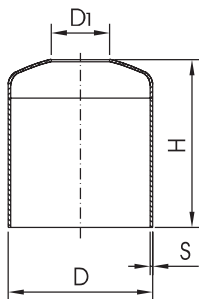
Mounting accessories

Ratchet



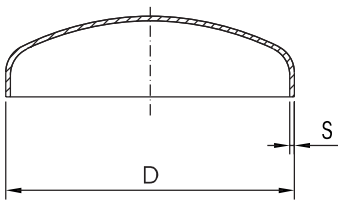
DN	SW	W [kg]
10-20	8	0,09
25-32	12	0,29
40-50	14	0,27
65	16	0,42
80-100	22	0,63

Bell for welding



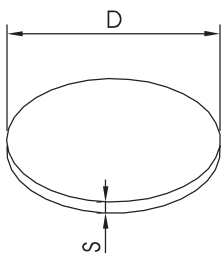
DN	D	D1	S	H	W [kg]
15	53	19,2	1,5	150	0,4
20	53	23,2	1,5	150	0,4
25	85	29,2	2	150	0,8
32	104	35,2	2	150	1,1
40	104	41,2	2	150	1,0
50	129	53,2	2	150	1,3
65	154	70,3	2	150	1,5
80	204	85,3	2	150	2,0
100	204	104,3	2	150	2,0

arched back



DN	D	S	W [kg]
25	28	2	0,14
32	35	2	0,23
40	40	2	0,23
50	54	2	0,32
65	70	2	0,46
80	85	2	0,82
100	104	2	0,82

Tin Ronde

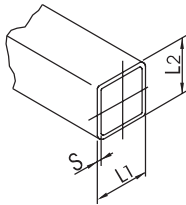


D	S	W [kg]
28	1,5	0,01
34	1,5	0,01
40	1,5	0,02
52	1,5	0,03
70	1,5	0,05
88	1,5	0,07
110	1,5	0,11
128	2	0,20
150	2	0,28
165	3	0,51
210	3	0,82
250	3	1,16

112007_1.000

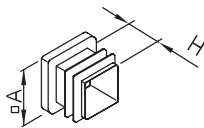
Mounting accessories

Square tube



L1	L2	S	W [kg]
			kg/m
25	25	2	1,502
30	30	2	1,803
35	35	2	2,117
40	40	2	2,454
50	50	2	3,080
60	60	2	3,709
80	80	3	4,988
100	100	3	9,422
40	20	2	1,802
50	30	2	2,451
60	40	2	3,078
80	40	2	3,709
100	50	2	4,670

Outer end cap, plastic for square tube



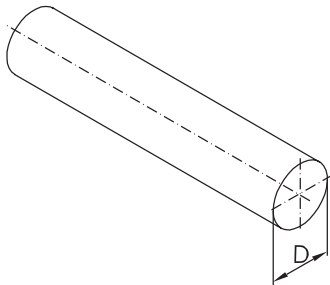
A	H
20	12
25	12
30	12
35	15
40	15
50	15
60	24
80	17

11.2007_1.000

www.rofi.de

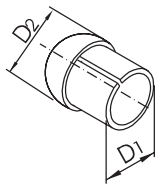
Assembly Computer Products

Round steel DIN 671



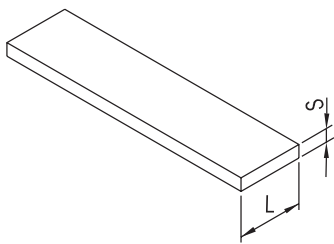
D	W [kg]
	kg/m
6	0,222
8	0,395
10	0,617
12	0,888
14	1,208
16	1,578
18	1,999
20	2,466

Connection dome to support tube



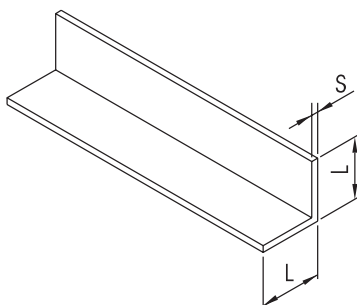
DN	D1	D2	W [kg]
25	28	26	0,07
32	34	32	0,08
40	40	38	0,10
50	52	50	0,13
65	70	66	0,34
80	85	81	0,41

Flat steel



L	S	W [kg]
		kg/m
20	3	0,471
25	3	0,589
30	3	0,707
35	5	1,370
40	5	1,570
50	6	2,360
60	6	2,830
80	8	5,020
100	8	6,280

Angle steel

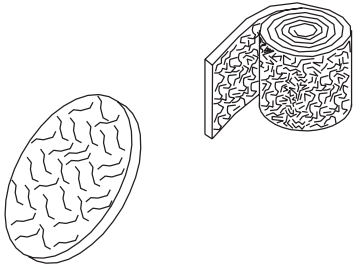


L	S	W [kg]
		kg/m
20	3	0,88
25	3	1,12
30	3	1,36
40	4	2,42
50	5	3,77
60	6	5,42

112007_1.000

Cleaning tool and welding wire

Scotch Disc



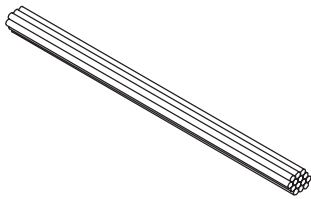
Scotch Disc

Ø 115

Scotch Tape

100 breit

Welding wire



D

1

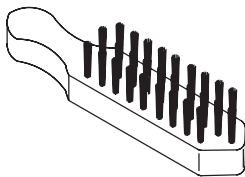
1,2

1,6

2

2,4

VA-Brush



2-row

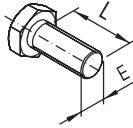
3-row

4-row

Body does not handle, stainless steel

Mounting accessories

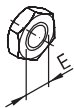
Hexagon DIN 933 A2



L
10
12
16
20
25
30
35
40
45
50
55
60
65
70
75
80
85
90
95
100
110
120

E = M6 - M24

Hex nut DIN 934 A2



E
M 6
M 8
M 10
M 12
M 14
M 16
M 20
M 24

Washer DIN 125 A2

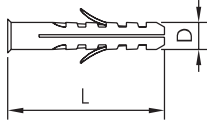


D
6,4
8,4
10,5
13
15
17
21
25

112007_1.000

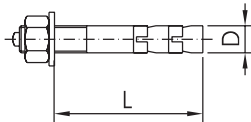
Mounting accessories

K-Dowels, plastic



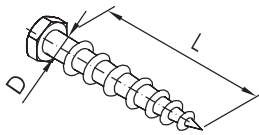
D	L
6	30
8	40
10	50
12	60
14	70
16	80
20	90

S-Dowels, galvanized steel (HILTI)



L	D
8	15
10	45
10	140
12	55

Hexagon wood screw DIN 571 A2



D	L
5	30
6	40
6	60
8	40
8	60
10	40
10	60
10	80
12	60
12	80



www.rofi.de

South

Karl-Arnold-Straße 7
D-73230 Kirchheim/Teck
Tel. +49 (0) 70 21 94 35-0
Fax +49 (0) 70 21 5 60 31
kirchheim@rofi.de

North Export

Mittelgönrather Straße 15
D-42655 Solingen
Tel. +49 (0) 2 12 2 32 54-0
Fax +49 (0) 2 12 2 32 54-11
solingen@rofi.de

RO-FI Precision in Stainless Steel



Reliability by quality management - ISO 9001