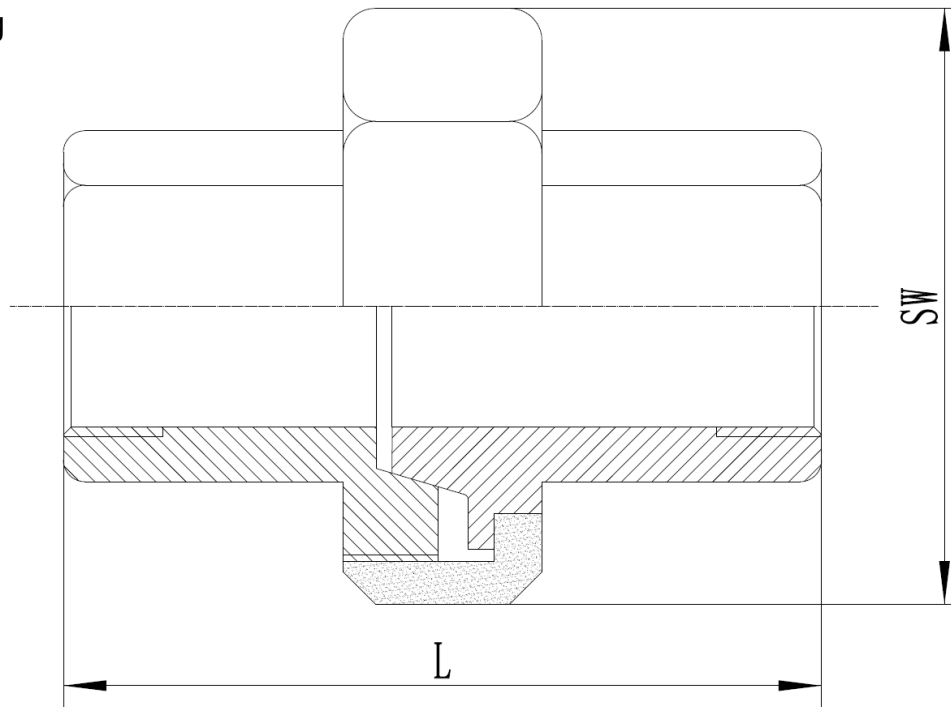


ECO-leichte Ausführung



**312 Verschraubung konisch dichtend, Innen-/Innengewinde
Union conical seat, female / female thread, V4A/316**

Dimension	L	SW
1/8"	24,0	25,0
1/4"	31,0	26,5
3/8"	32,0	31,0
1/2"	36,0	37,5
3/4"	43,2	46,0
1"	47,0	51,0
1 1/4"	51,0	63,0
1 1/2"	54,9	71,0
2"	64,0	83,5
2 1/2"	70,0	104,8
3"	82,6	116,8
4"	88,5	142,0

Toleranz +/- 1,0 mm

RO-FI / 312 (E316) 2019-12 / F