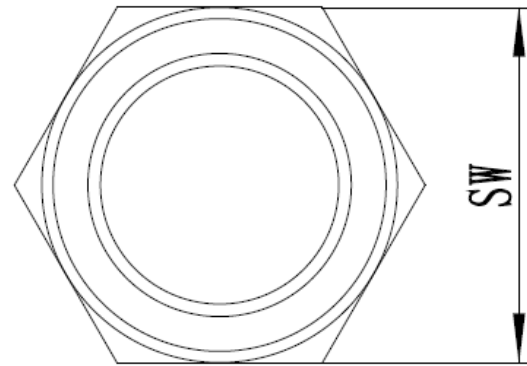
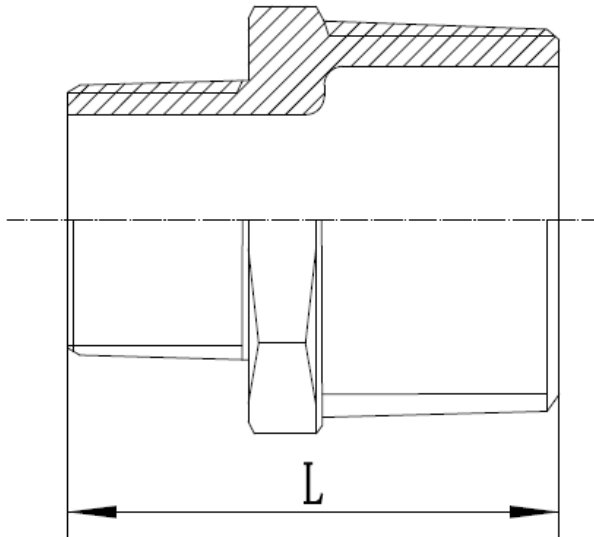


ECO-leichte Ausführung



341 6 / 8-kt. Reduzierdoppelnippel
Hex.-/Oct. - Nipple, reduced V4A/AISI 316

Dimension	L	SW		Dimension	L	SW
1/4" x 1/8"	30,3	15		1 1/2" x 3/4"	45	49,5
3/8" x 1/8"	24	17,5		1 1/2" x 1"	52,5	51
3/8" x 1/4"	29	18		1 1/2" x 1 1/4"	50	49,5
1/2" x 1/4"	32,5	21,5		2" x 1"	51	62
1/2" x 3/8"	32,5	21,5		2" x 1 1/4"	54,5	61,5
3/4" x 3/8"	42,5	29		2" x 1 1/2"	61	63
3/4" x 1/2"	37	27,5		2 1/2" x 1 1/2"	66	78
1" x 1/2"	40	34,5		2 1/2" x 2"	58	76,5
1" x 3/4"	41,5	34,5		3" x 2 1/2"	64,5	90
1 1/4" x 1"	47	43		4" x 3"	84,4	118,6

Ab 1" x 1/4" 8-Kant, ab 2 1/2" x 2" 10-Kant.

Toleranz +/- 1,0 mm



Gewinde RxR-EN 10226 (alt DIN 2999)

d2-d1	SW	L	kg	d2-d1	SW	L	kg
1/4"- 1/8"	17,0	29	0,02	1 1/4"- 1"	46,5	46	0,16
3/8"- 1/8"	20,0	30	0,03	1 1/2"- 1/2"	52,0	51	0,20
3/8"- 1/4"	20,0	33	0,03	1 1/2"- 3/4"	52,0	49	0,34
1/2"- 1/8"	25,0	33	0,05	1 1/2"- 1"	52,0	50	0,23
1/2"- 1/4"	25,0	36	0,05	1 1/2"- 1 1/4"	52,0	50	0,23
1/2"- 3/8"	25,0	37	0,05	2"- 1"	63,0	53	0,32
3/4"- 1/4"	32,0	38	0,07	2"- 1 1/4"	63,0	56	0,34
3/4"- 3/8"	32,0	39	0,07	2"- 1 1/2"	63,0	57	0,34
3/4"- 1/2"	32,0	44	0,08	2 1/2"- 1 1/4"	80,0	69	0,60
1"- 3/8"	38,0	42	0,11	2 1/2"- 1 1/2"	80,0	69	0,78
1"- 1/2"	38,0	45	0,12	2 1/2"- 2"	80,0	64	0,56
1"- 3/4"	38,0	46	0,12	3"- 1 1/2"	98,0	71	1,00
1 1/4"- 1/2"	46,5	45	0,20	3"- 2"	93,0	66	0,78
1 1/4"- 3/4"	46,5	45	0,16	3"- 2 1/2"	92,0	68	0,95

