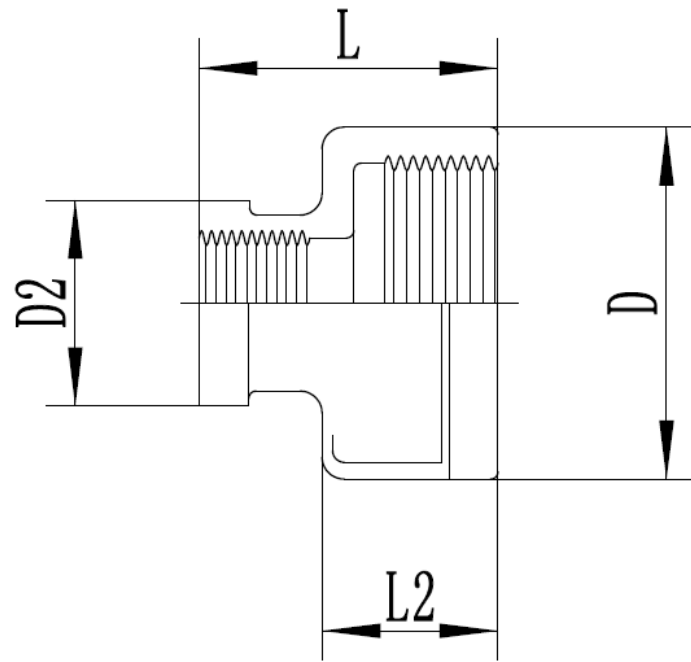


ECO-leichte Ausführung



**335 Reduziermuffe, I/I Gewinde**  
**Reducing Socket, F/F V4A/AISI 316**

Dimension	L	L2	D	D2
1/4" x 1/8"	25,5	13,0	17,0	15,0
3/8" x 1/8"	29,0	17,0	21,0	15,0
3/8" x 1/4"	29,0	17,0	21,0	17,0
1/2" x 1/4"	29,0	19,0	25,5	17,0
1/2" x 3/8"	31,0	19,0	25,5	20,5
3/4" x 1/4"	30,0	20,0	31,5	17,0
3/4" x 3/8"	33,5	20,0	31,5	20,5
3/4" x 1/2"	33,5	20,0	31,5	26,0
1" x 1/4"	35,0	24,0	39,0	17,0
1" x 1/2"	38,0	24,0	39,0	26,0
1" x 3/4"	38,0	24,0	39,0	31,5
1 1/4" x 1/2"	42,0	26,0	48,5	26,0
1 1/4" x 3/4"	42,0	26,0	48,5	31,5
1 1/4" x 1"	44,0	26,0	48,5	39,0
1 1/2" x 1/2"	39,0	23,0	54,0	26,0
1 1/2" x 3/4"	41,0	23,0	54,0	31,5
1 1/2" x 1"	40,0	23,0	54,0	39,0
1 1/2" x 1 1/4"	46,0	23,0	54,0	48,5
2" x 1"	45,0	29,0	67,0	39,0
2" x 1 1/4"	48,0	29,0	67,0	48,5
2" x 1 1/2"	50,0	29,0	68,5	56,0
2 1/2" x 2"	55,0	30,0	83,5	67,0
3" x 2"	60,0	35,0	97,0	67,0
3" x 2 1/2"	60,0	35,0	97,0	83,5
4" x 3"	65,0	35,0	124	97,0

Toleranz +/- 1,0 mm



## Gewinde Rp-EN 10226 (alt DIN 2999)

d2-d1	L	kg	d2-d1	L	kg
1/4" - 1/8"	27 mm	0,03	1 1/4" - 1"	44 mm	0,17
3/8" - 1/8"	30 mm	0,04	1 1/2" - 1/2"	48 mm	0,20
3/8" - 1/4"	30 mm	0,04	1 1/2" - 3/4"	48 mm	0,17
1/2" - 1/8"	36 mm	0,07	1 1/2" - 1"	48 mm	0,34
1/2" - 1/4"	36 mm	0,07	1 1/2" - 1"	48 mm	0,34
1/2" - 3/8"	36 mm	0,07	2" - 3/4"	56 mm	0,31
3/4" - 1/4"	35 mm	0,09	2" - 1"	56 mm	0,31
3/4" - 3/8"	35 mm	0,10	2" - 1 1/4"	56 mm	0,35
3/4" - 1/2"	35 mm	0,07	2" - 1 1/2"	56 mm	0,36
1" - 3/8"	40 mm	0,16	2 1/2" - 1 1/2"	62 mm	0,76
1" - 1/2"	40 mm	0,10	2 1/2" - 2"	62 mm	0,52
1" - 3/4"	40 mm	0,11	3" - 2"	67 mm	0,73
1 1/4" - 1/2"	44 mm	0,20	3" - 2 1/2"	76 mm	0,85

