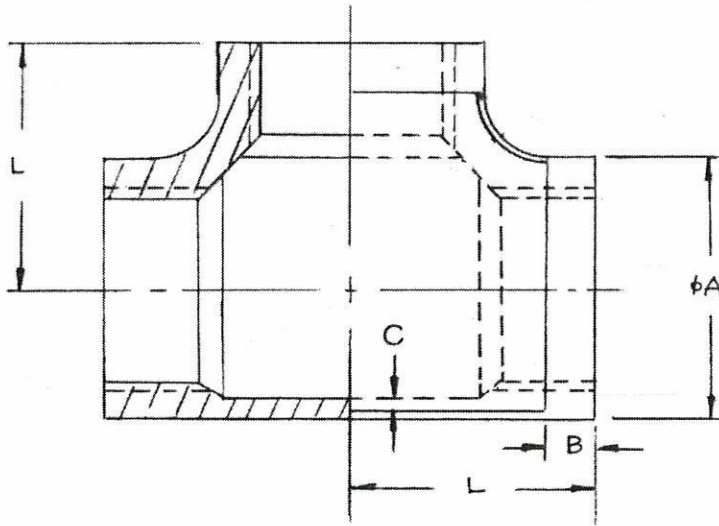


			TEE			
			2018.7.30			



	ϕA	B	C	L						
1/8"	15	5	1.5	17.8						
1/4"	18.6	5	1.5	19.6						
3/8"	22	7	1.5	22.6						
1/2"	27	6	1.5	25.7						
3/4"	32.5	7	1.6	29.7						
1"	40.2	8	1.8	36.7						
1¼"	49.7	9	2	43.5						
1½"	55.7	9	2.1	47						
2"	68.5	10	2.4	53.8						
2½"	84.5	11	2.5	66.6						
3"	100.5	12	3	75						
4"	127	13	3.3	91						