

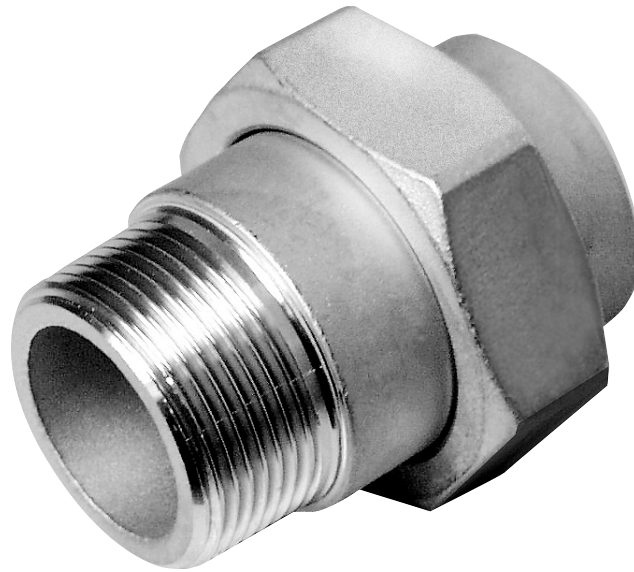
## Screwed fittings



RO-FI Precision in Stainless Steel

311 A/S

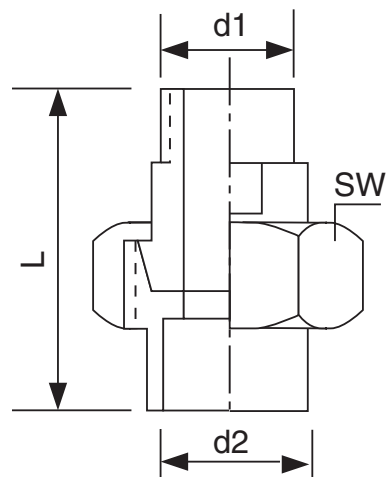
Union flat male / but weld end, 1.4401 / AISI 316



11.2007\_1.000

www.rofi.de

NW	d1	d2	L	SW	kg
8	13,5 mm	1/4"	52 mm	34 mm	0,14
10	17,2 mm	3/8"	50 mm	34 mm	0,15
15	21,3 mm	1/2"	55 mm	38 mm	0,21
20	26,9 mm	3/4"	62 mm	42 mm	0,29
25	33,7 mm	1"	65 mm	49 mm	0,39
32	42,4 mm	1 1/4"	74 mm	60 mm	0,58
40	48,3 mm	1 1/2"	86 mm	70 mm	0,86
50	60,3 mm	2"	92 mm	77 mm	1,44
65	76,1 mm	2 1/2"	115 mm	109 mm	1,99
80	88,9 mm	3"	123 mm	125 mm	2,60



Unions  
turned quality  
on request



www.rofi.de

#### South

Karl-Arnold-Straße 7  
D-73230 Kirchheim/Teck  
Tel. +49 (0) 70 21 94 35-0  
Fax +49 (0) 70 21 5 60 31  
kirchheim@rofi.de

#### North Export

Mittelgönrather Straße 15  
D-42655 Solingen  
Tel. +49 (0) 2 12 2 32 54-0  
Fax +49 (0) 2 12 2 32 54-11  
solingen@rofi.de

#### Middle

Ostendstraße 3  
D-63110 Rodgau-Niederroden  
Tel. +49 (0) 61 06 2 85 79-30  
Fax +49 (0) 61 06 2 22 08  
rodgau@rofi.de

RO-FI Precision in Stainless Steel



Reliability by quality management - ISO 9001